



*St Edmundsbury*  
BOROUGH COUNCIL

# D63

## **Bury St Edmunds Area Working Party 9 July 2012**

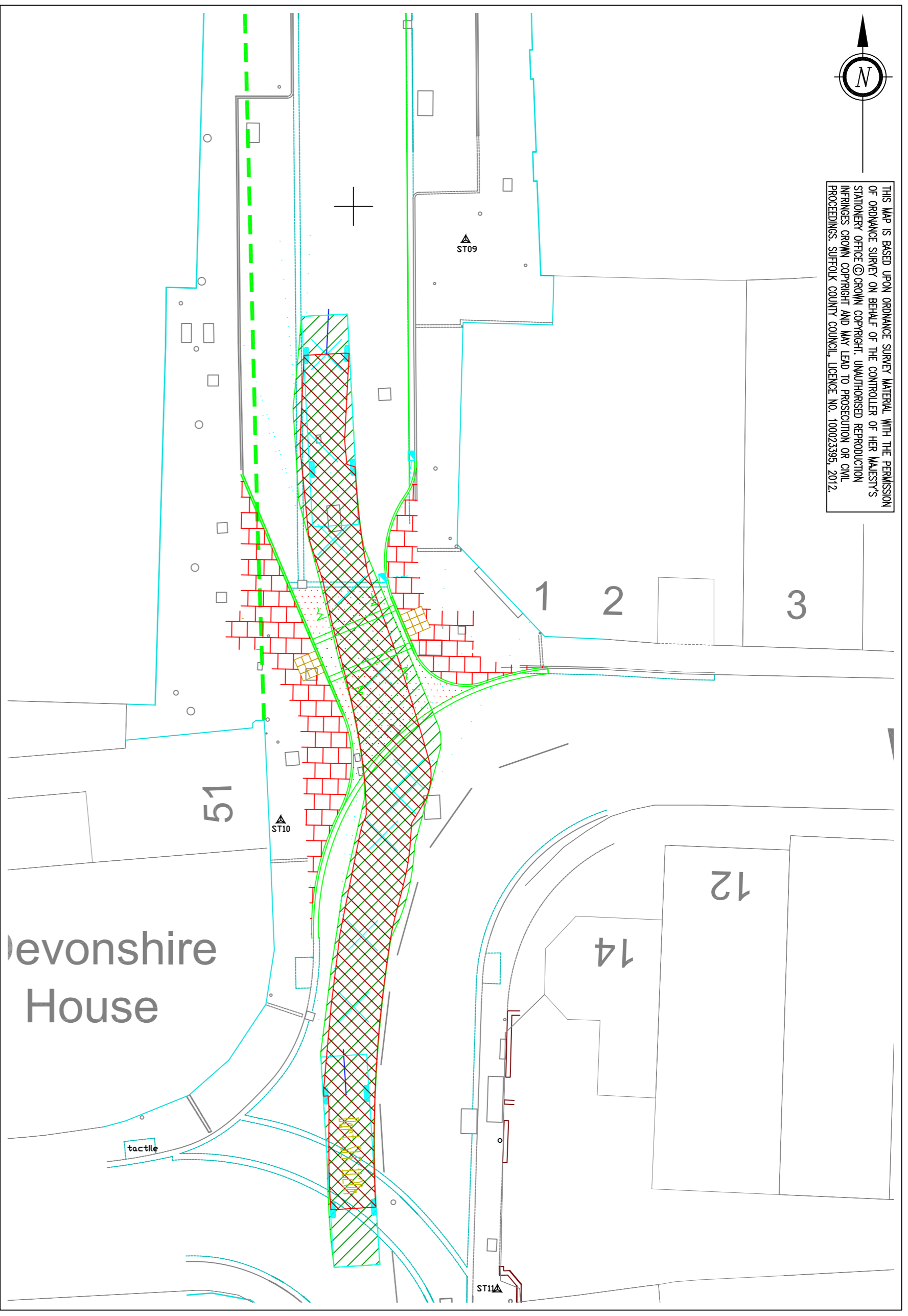
### **Improvements to St Andrews Street South**

Attached are working drawings showing the proposed works relating to the above-mentioned scheme.

Please note that these are working drawings at this stage and not in the format of plans normally presented to Members.

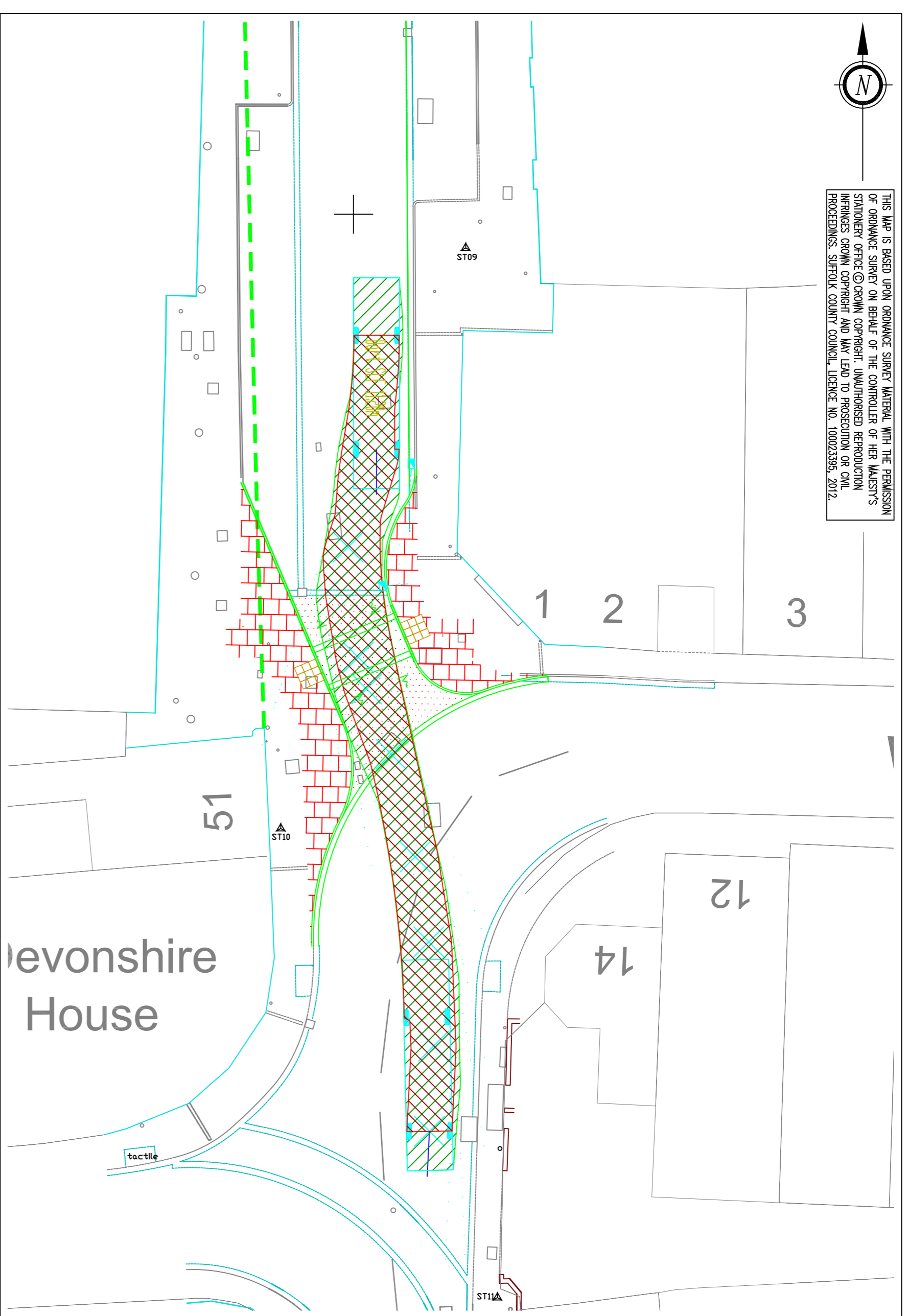
W:\Democratic WP Services\Committee\Reports\Bury St Edmunds Area Working Party\2012\12.07.09\D63 Improvements to St Andrews Street South - front sheet.doc

THIS WORK IS BASED UPON ORIGINALLY SUBMITTED MATERIAL WITH THE PERMISSION OF ORIGINATE SOURCE ON BEHALF OF THE CONTROLLER OF HER MAJESTY'S STATIONERY OFFICE (CROWN COPYRIGHT). UNAUTHORIZED REPRODUCTION OR TRANSMISSION IN ANY FORM OR BY ANY MEANS (ELECTRONIC, MECHANICAL, PHOTOCOPYING, RECORDING, SIFTING, SCANNING, PHOTODUPLICATION, OR OTHERWISE) WITHOUT THE WRITTEN PERMISSION OF THE CONTROLLER OF HER MAJESTY'S STATIONERY OFFICE IS PROHIBITED. SUFFOLK COUNTY COUNCIL, LICENSE NO. 100023396, 2012.



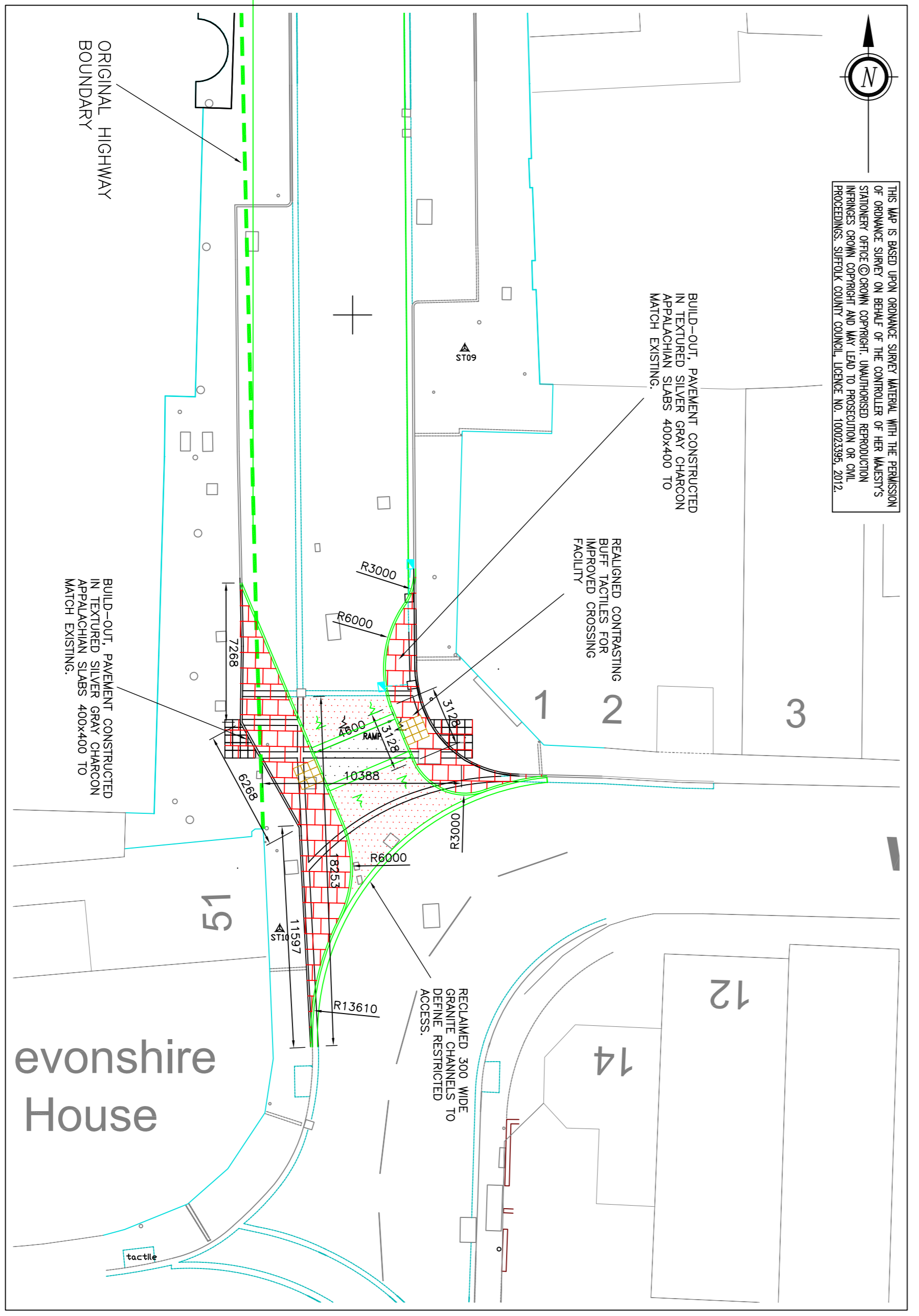
**BUILD-OUT OPTION 2**  
**NORTH BOUND AUTO-TRACK DART SLF 11.20**  
**SCALE 1:200**

THIS WORK IS BASED UPON ORIGINALLY SUBMITTED MATERIAL WITH THE PERMISSION OF ORIGINATE SOURCE ON BEHALF OF THE CONTROLLER OF HER MAJESTY'S STATIONERY OFFICE (CROWN COPYRIGHT). UNAUTHORIZED REPRODUCTION OR TRANSMISSION IN ANY FORM OR BY ANY MEANS (ELECTRONIC, MECHANICAL, PHOTOCOPYING, RECORDING, SIFTING, SCANNING, PHOTODUPLICATION, OR OTHERWISE) WITHOUT THE WRITTEN PERMISSION OF THE CONTROLLER OF HER MAJESTY'S STATIONERY OFFICE IS PROHIBITED. SUFFOLK COUNTY COUNCIL, LICENSE NO. 100023396, 2012.

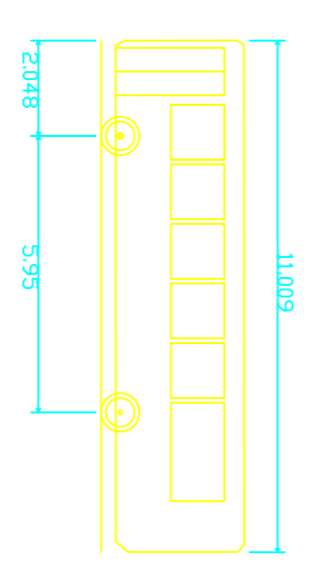


**BUILD-OUT OPTION 2**  
**SOUTH BOUND AUTO-TRACK DART SLF 11.20**  
**SCALE 1:200**


THIS WORK IS BASED UPON ORIGINALLY SUBMITTED MATERIAL WITH THE PERMISSION OF ORIGINATE SOURCE ON BEHALF OF THE CONTROLLER OF HER MAJESTY'S STATIONERY OFFICE (CROWN COPYRIGHT). UNAUTHORIZED REPRODUCTION OR TRANSMISSION IN ANY FORM OR BY ANY MEANS (ELECTRONIC, MECHANICAL, PHOTOCOPYING, RECORDING, SIFTING, SCANNING, PHOTODUPLICATION, OR OTHERWISE) WITHOUT THE WRITTEN PERMISSION OF THE CONTROLLER OF HER MAJESTY'S STATIONERY OFFICE IS PROHIBITED. SUFFOLK COUNTY COUNCIL, LICENSE NO. 100023396, 2012.



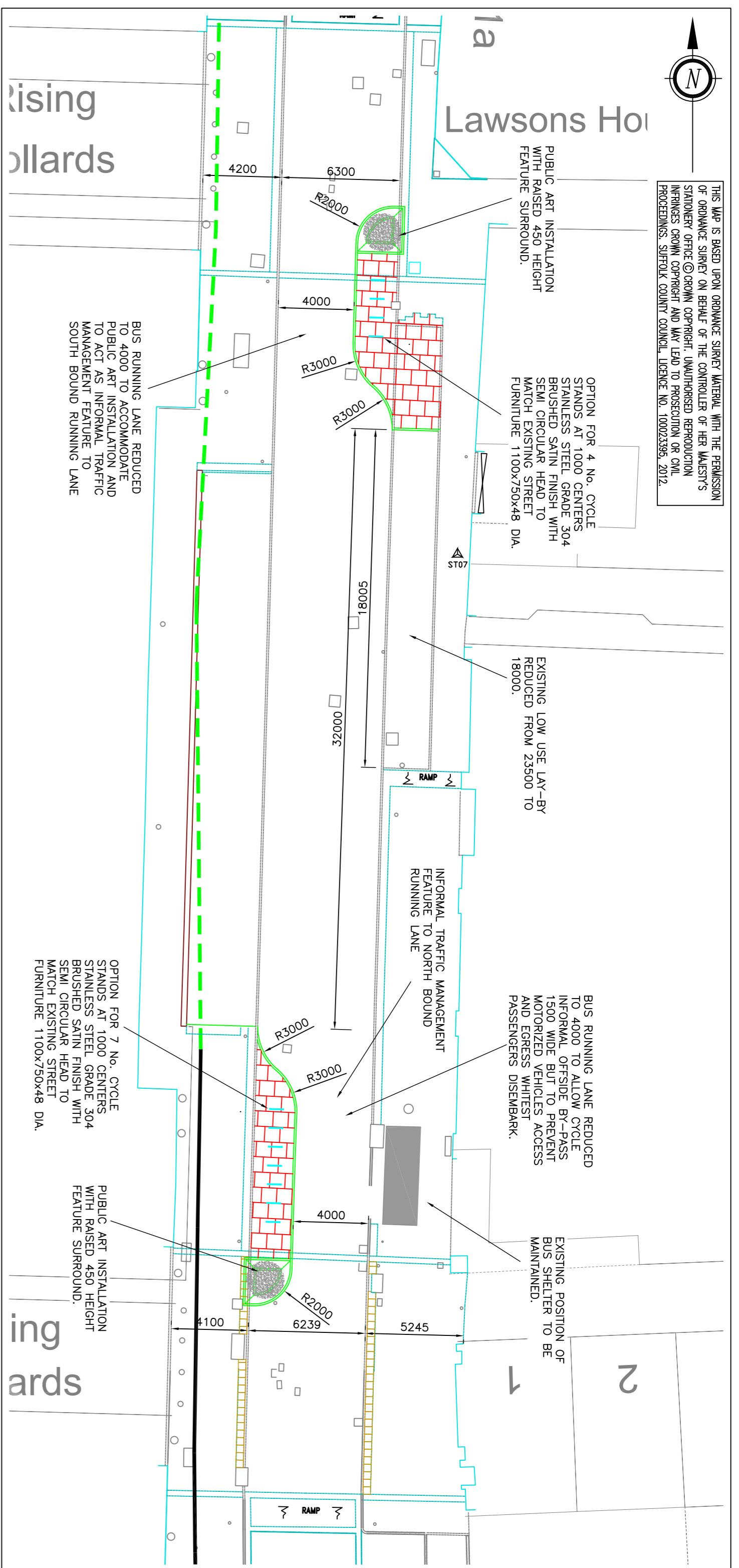
**BUILD-OUT OPTION 2**  
**SCALE 1:200**



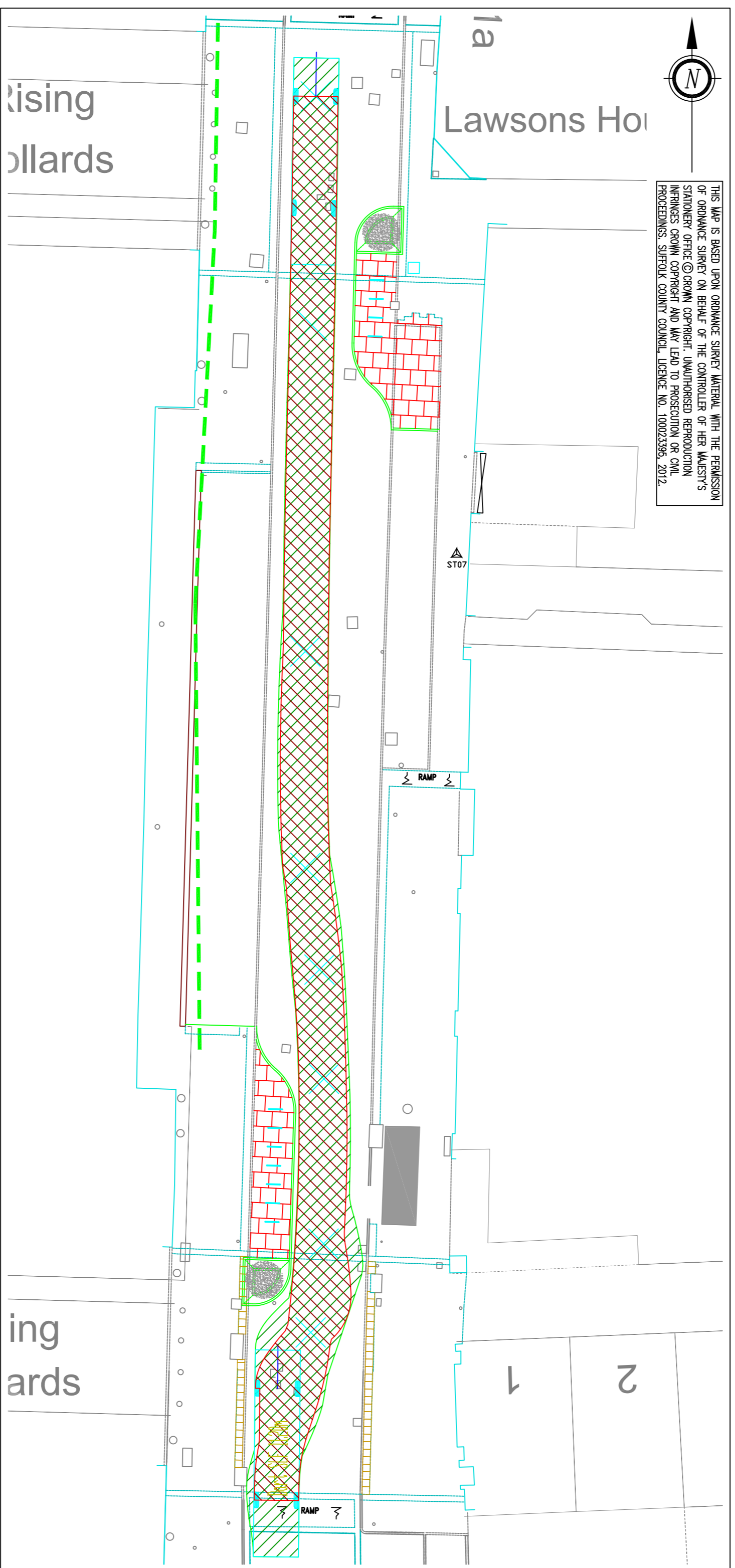
Dart SLF 11.20m  
 Overall Length 11.009m  
 Overall Width 3.077m  
 Min Body Ground Clearance 2.350m  
 Track Width 2.350m  
 Kerb to Kerb Turning Radius 9.318m

<b>REVISION(S)</b>				
UPDATED TO PROGRESS MEETING		A	JUNE 12	
<b>DESCRIPTION</b>		RR	DATE	INITIALS
 Suffolk County Council Lorry Robinson, Director of Economy, Skills & Environment Endeavour House, 8 Russell Road, Ipswich, Suffolk, IP1 2EX				
<b>PROJECT TITLE</b>				
RISBYGATE ST / ST ANDREWS STREET				
BURY ST EDMUNDS				
<b>DRAWING TITLE</b>				
BUILD-OUT OPTIONS 2				
<b>ORIGINATOR</b>	<b>CHECKER</b>	<b>DESIGNER</b>	<b>REVIEWER</b>	
MAC				
<b>SCALE(S)</b>		<b>ORIGINAL SIZE</b>	<b>DATE</b>	
AS SHOWN		A1	MAY 2012	
<b>DRAWING NUMBER</b>	<b>REVISION</b>			
ET01171-SASS-1100-02	A			

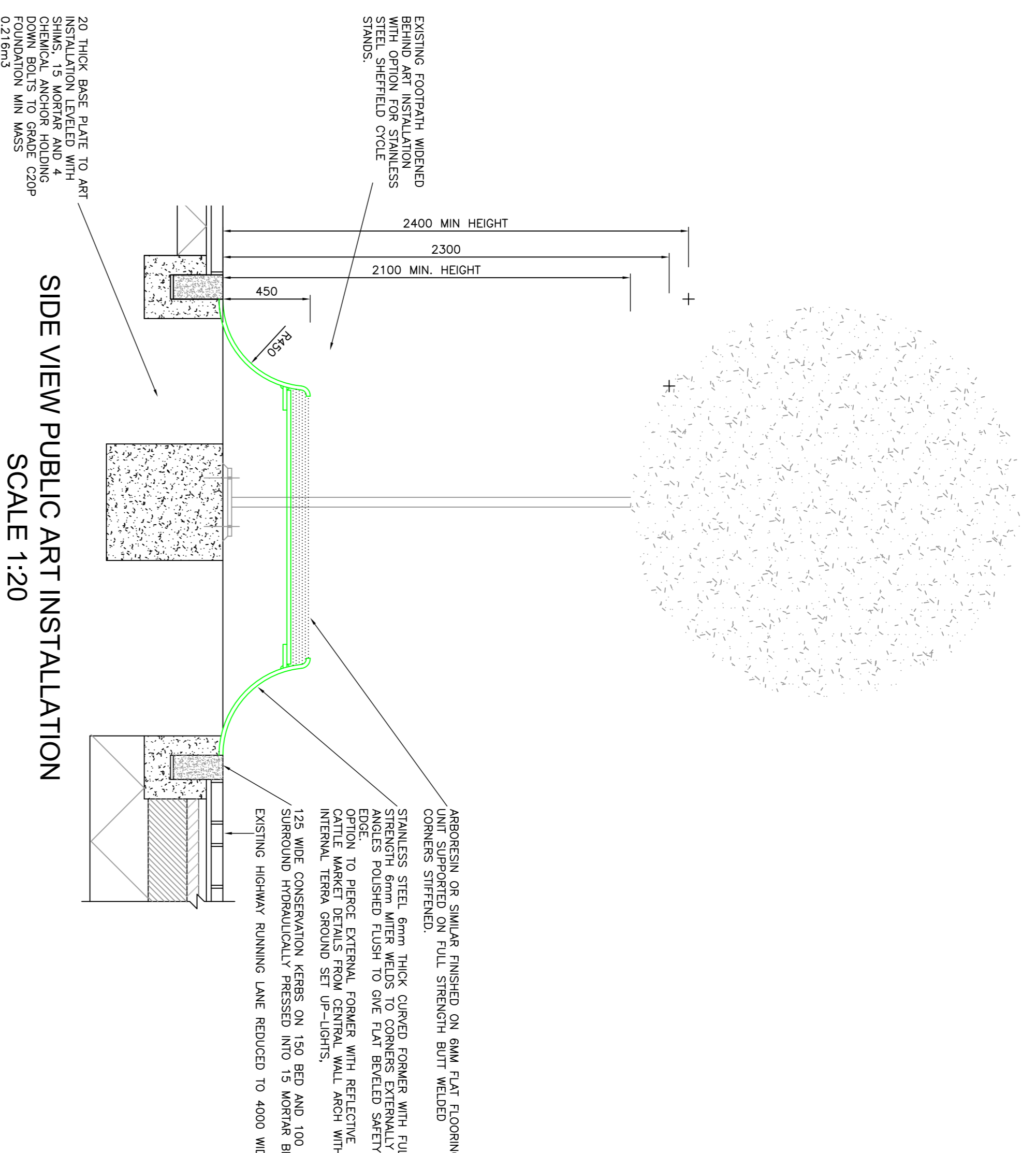
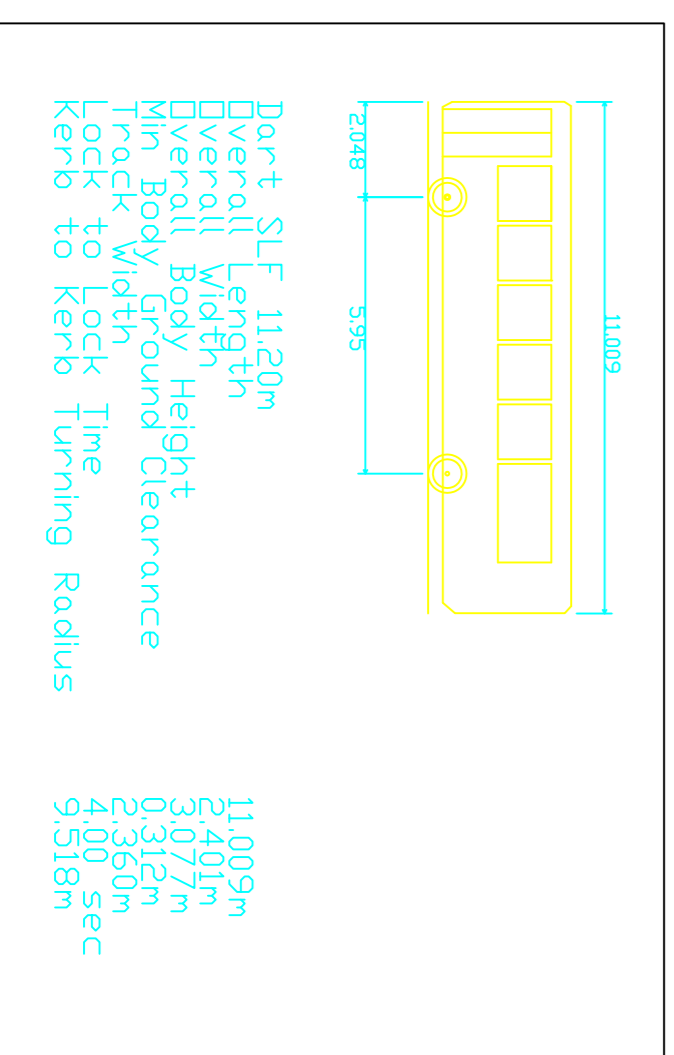




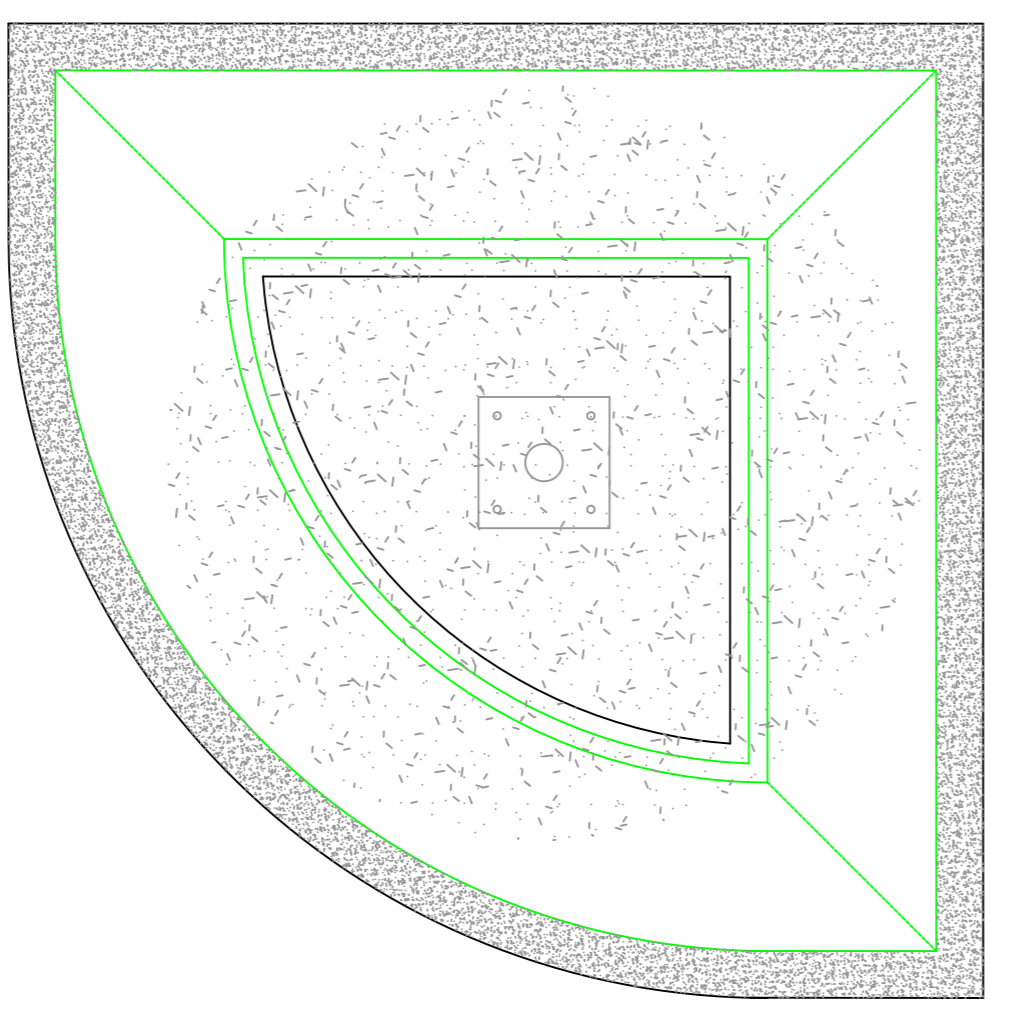
BUILD-OUT TO CENTRAL WALK AND MARKET THOROUGHFARE  
SCALE 1:200



AUTO TRACK DART SLF NORTH BOUND  
SCALE 1:200



SIDE VIEW PUBLIC ART INSTALLATION  
SCALE 1:20



PLAN VIEW PUBLIC ART INSTALLATION  
SCALE 1:20

REVISION(S)	
UPDATED TO PROGRESS MEETING	A JUNE 12
DESCRIPTION	REV. DATE INTL.

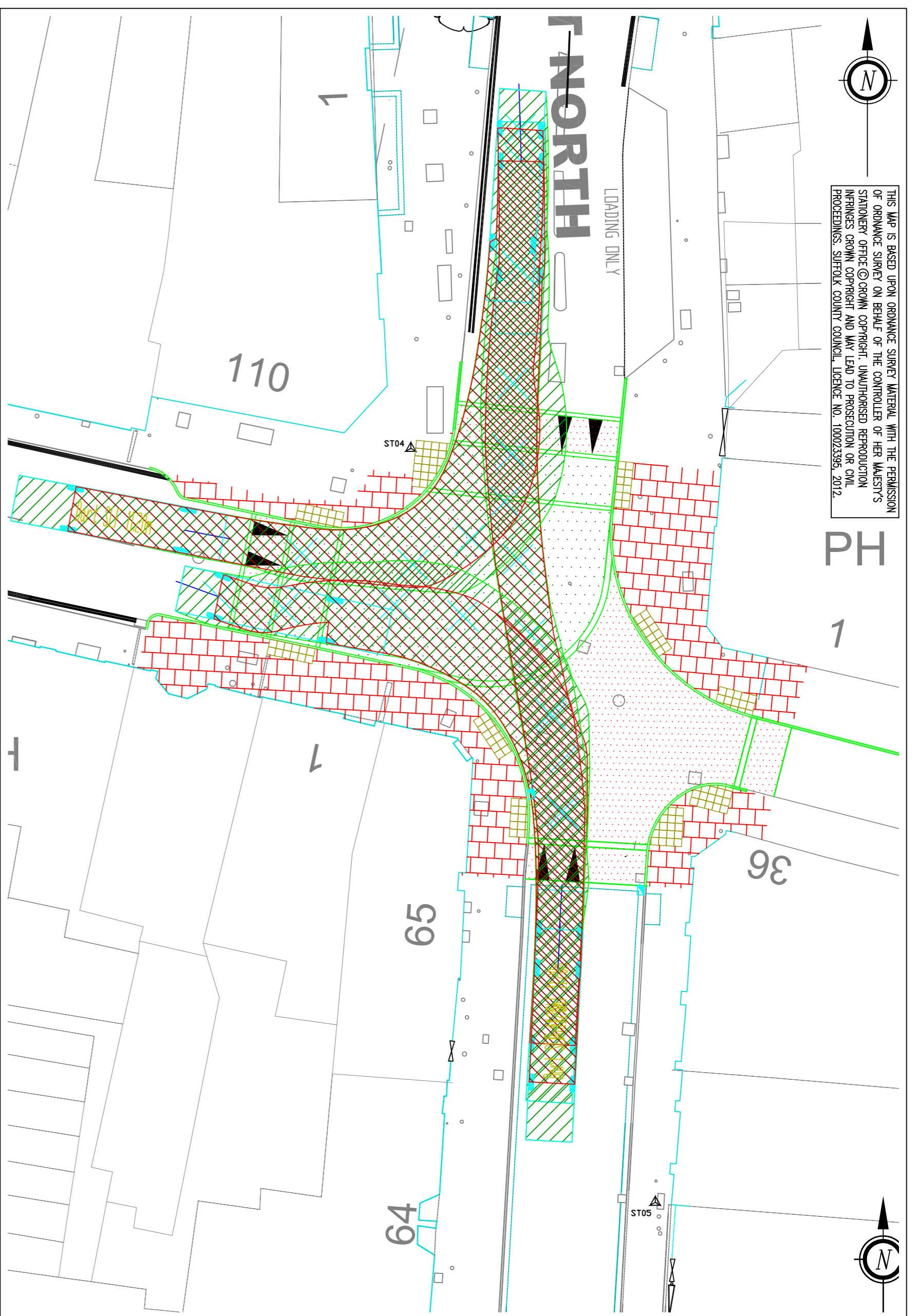
  

<p>Suffolk County Council Lung Robinson, Director of Economy, Skills &amp; Environment Endeavour House, 8 Russell Road, Ipswich, Suffolk, IP1 2EX</p>	
PROJECT TITLE	RSBYGATE ST/ST ANDREWS STREET BURY ST EDMUNDS
DRAWING TITLE	ART INSTALLATION TO CENTRAL WALK AND MARKET THOROUGHFARE
ORIGINATOR	CHECKER
DESIGNER	REVIEWER
MAC	
SCALES	ORIGINAL SIZE A1
AS SHOWN	MAY 2012
DRAWING NUMBER	ET01171-SASS-1100-05
	REVISION

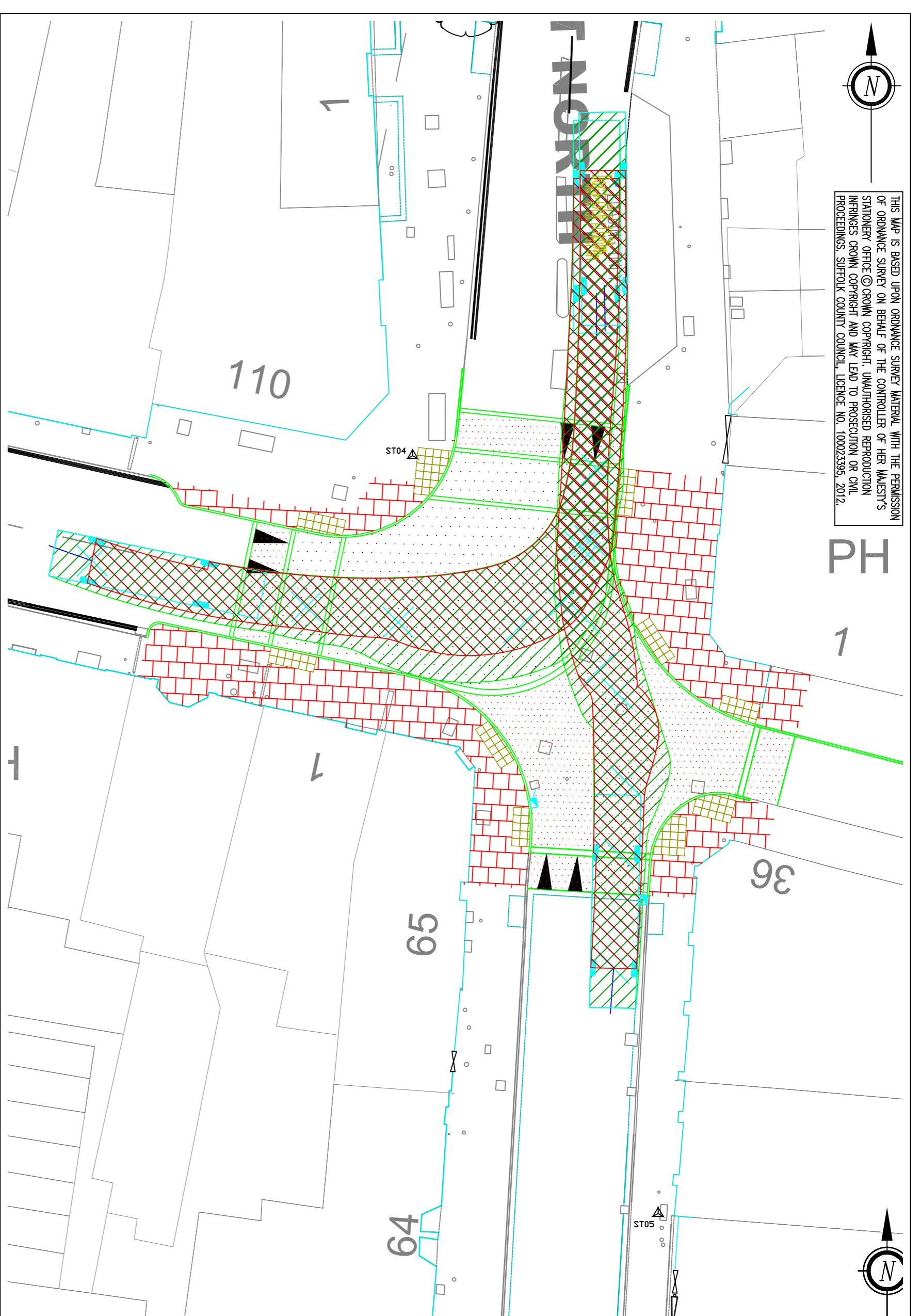




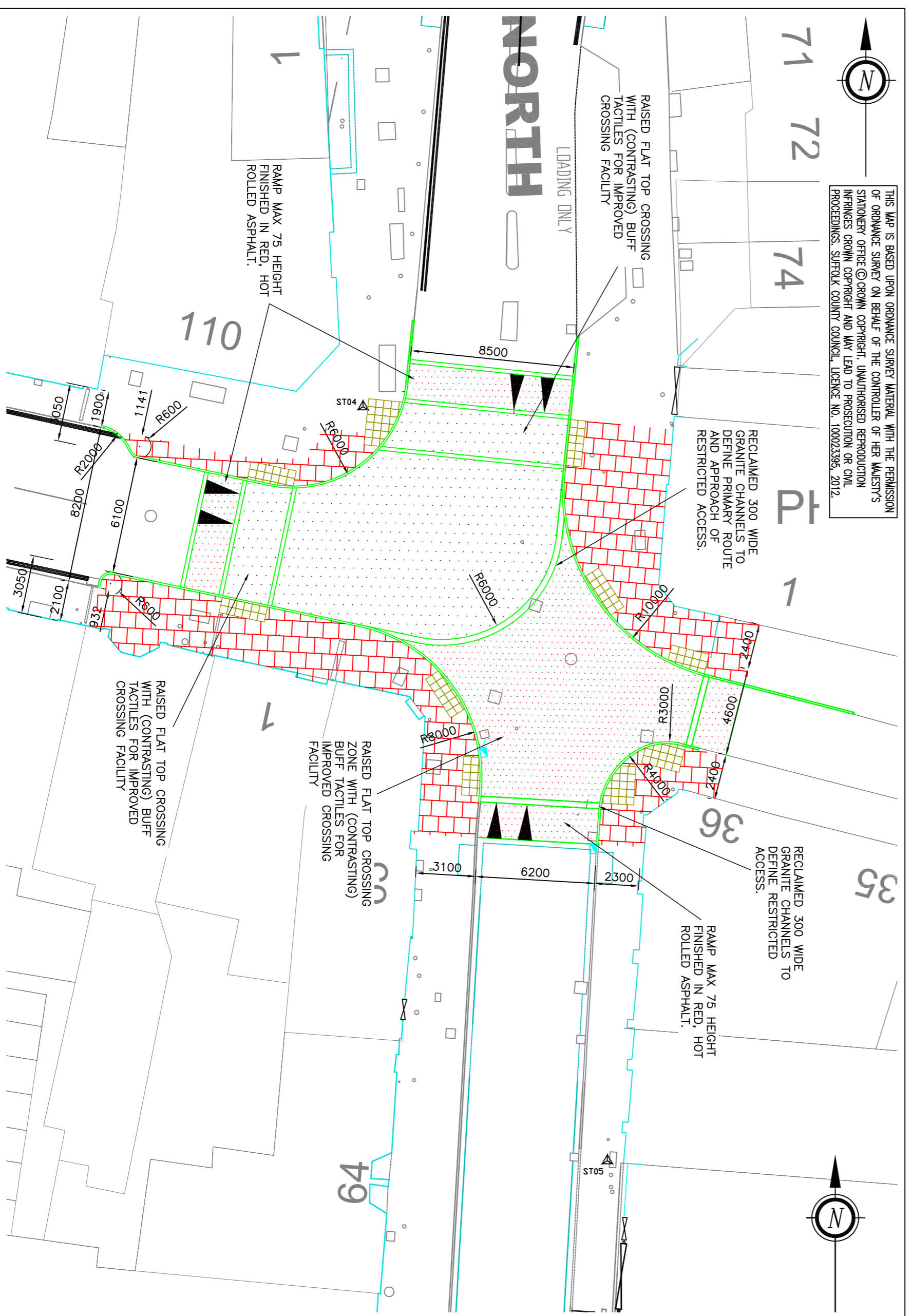




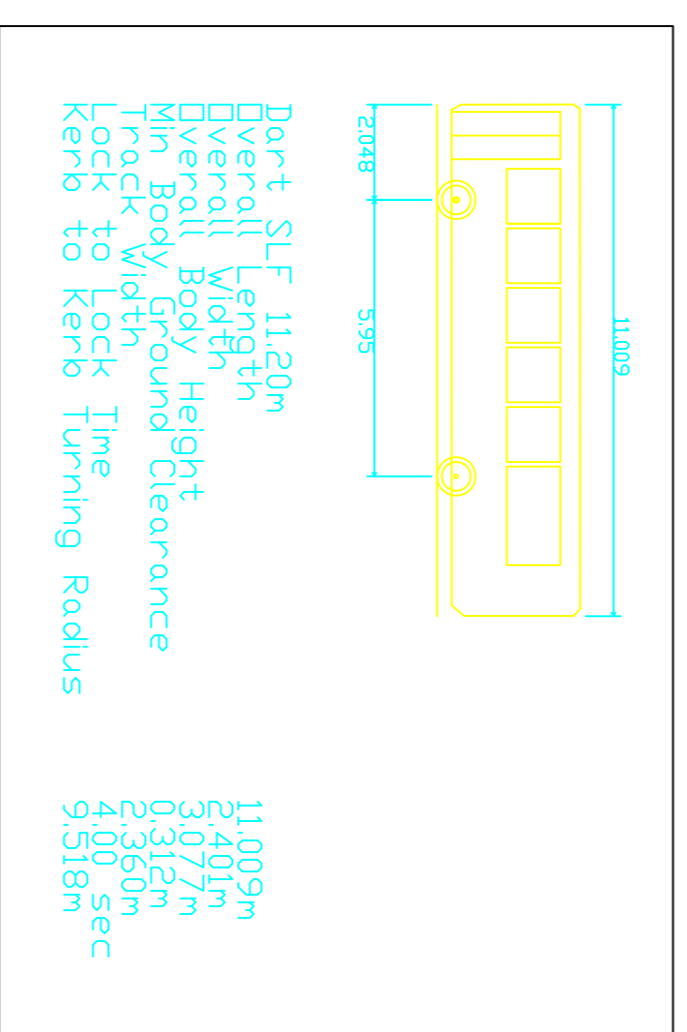
FLAT TOP JUNCTION  
NORTH BOUND AUTO-TRACK DART SLF 11.20  
SCALE 1:200



FLAT TOP JUNCTION  
SOUTH BOUND AUTO-TRACK DART SLF 11.20  
SCALE 1:200



FLAT TOP JUNCTION  
RAISED FLAT TOP CROSSING  
SCALE 1:200



REVISION(S)	DESCRIPTION	REV.	DATE	INITIALS

Lutz Robinson, Director of Economy, Skills & Environment Endeavour House, 8 Russell Road, Ipswich, Suffolk, IP1 2EX	
PROJECT TITLE	RISBYGATE ST/ST ANDREWS STREET
DRAWING TITLE	BURY ST EDMUNDS
FLAT TOP JUNCTION OPTIONS 3	
ORIGINATOR	CHECKER
DESIGNER	REVIEWER
SCALE(S)	ORIGINAL SIZE A1
AS SHOWN	MAY 2012
DRAWING NUMBER	REVISION
ET01171-SASS-1100-03	