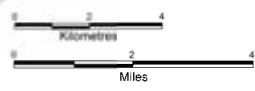
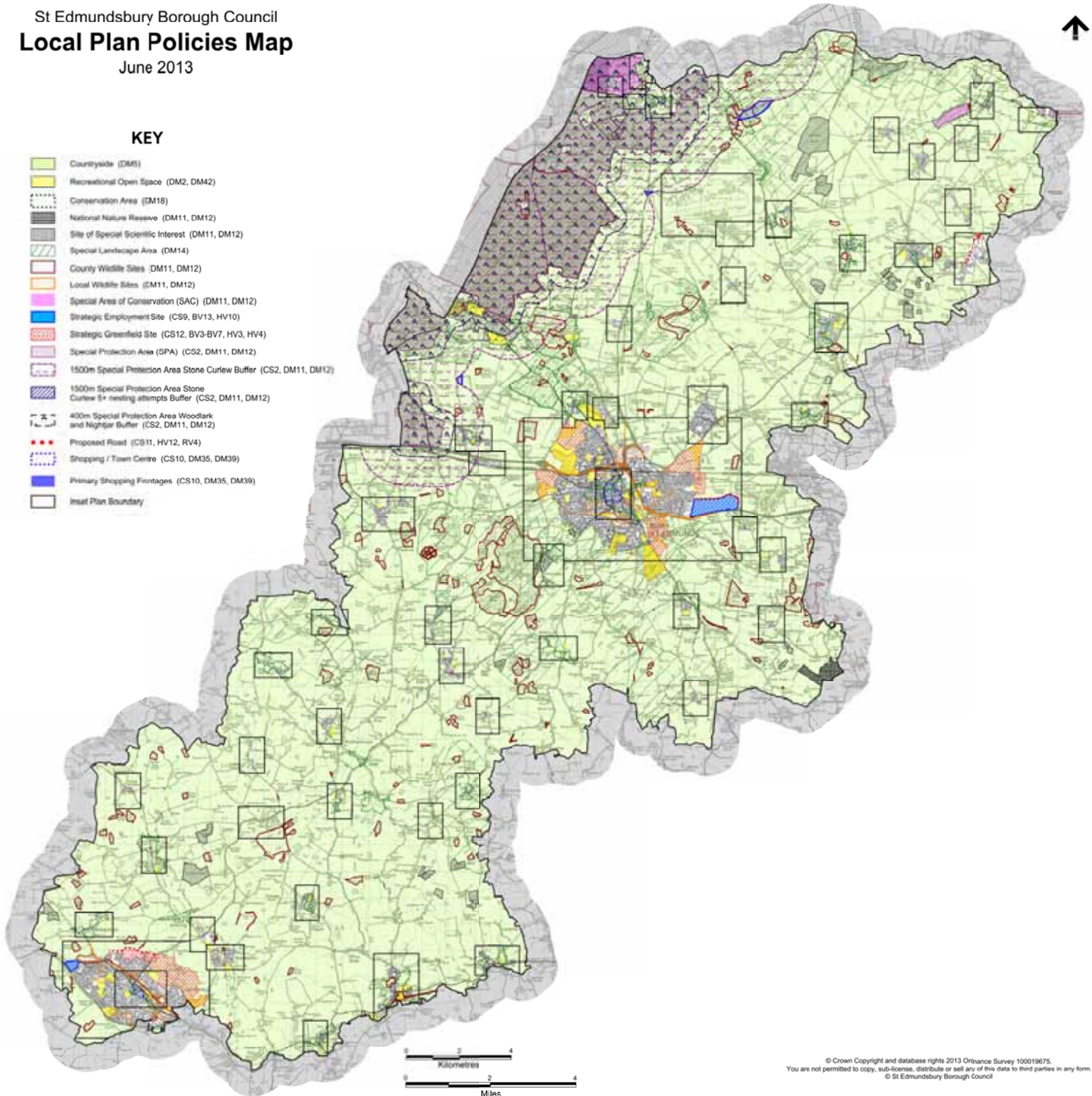


St Edmundsbury Borough Council
Local Plan Policies Map
 June 2013



KEY

- Countryside (DM5)
- Recreational Open Space (DM2, DM42)
- Conservation Area (DM18)
- National Nature Reserve (DM11, DM12)
- Site of Special Scientific Interest (DM11, DM12)
- Special Landscape Area (DM14)
- County Wildlife Sites (DM11, DM12)
- Local Wildlife Sites (DM11, DM12)
- Special Area of Conservation (SAC) (DM11, DM12)
- Strategic Employment Site (CS9, BV13, HV10)
- Strategic Greenfield Site (CS12, BV3-BV7, HV3, HV4)
- Special Protection Area (SPA) (CS2, DM11, DM12)
- 1500m Special Protection Area Stone Curlew Buffer (CS2, DM11, DM12)
- 1500m Special Protection Area Stone Curlew ♀+ nesting attempts Buffer (CS2, DM11, DM12)
- 400m Special Protection Area Woodlark and Nighthawk Buffer (CS2, DM11, DM12)
- Proposed Road (CS11, HV12, RV4)
- Shopping / Town Centre (CS10, DM35, DM39)
- Primary Shopping Frontages (CS10, DM35, DM39)
- Inset Plan Boundary



© Crown Copyright and database rights 2013 Ordnance Survey 100019675.
 You are not permitted to copy, sub-license, distribute or sell any of this data to third parties in any form.
 © St Edmundsbury Borough Council