

**BRICKS (HANSON)**

- WORCESTERSHIRE RED MULTI
- VILLAGE HARVEST MULTI

**ROOF TILES**

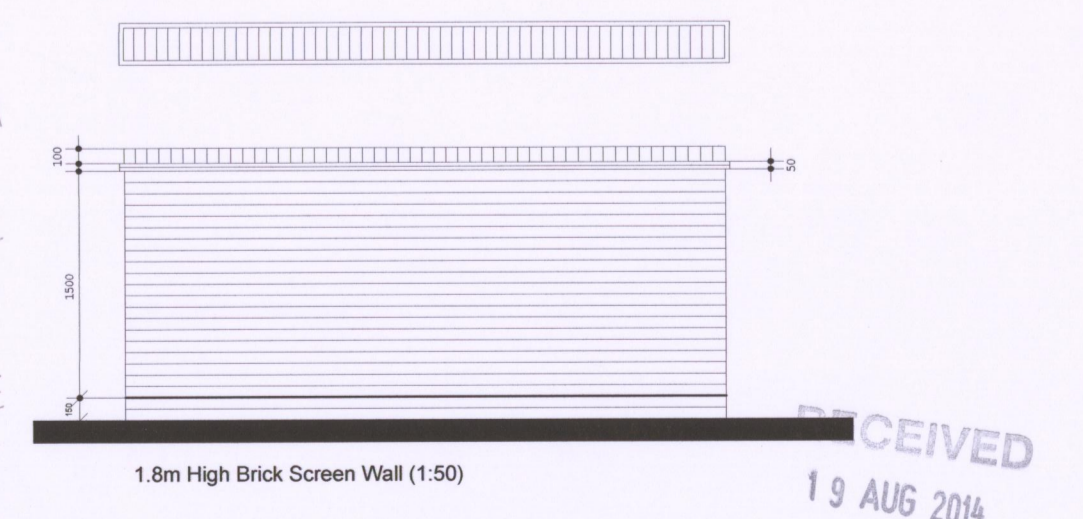
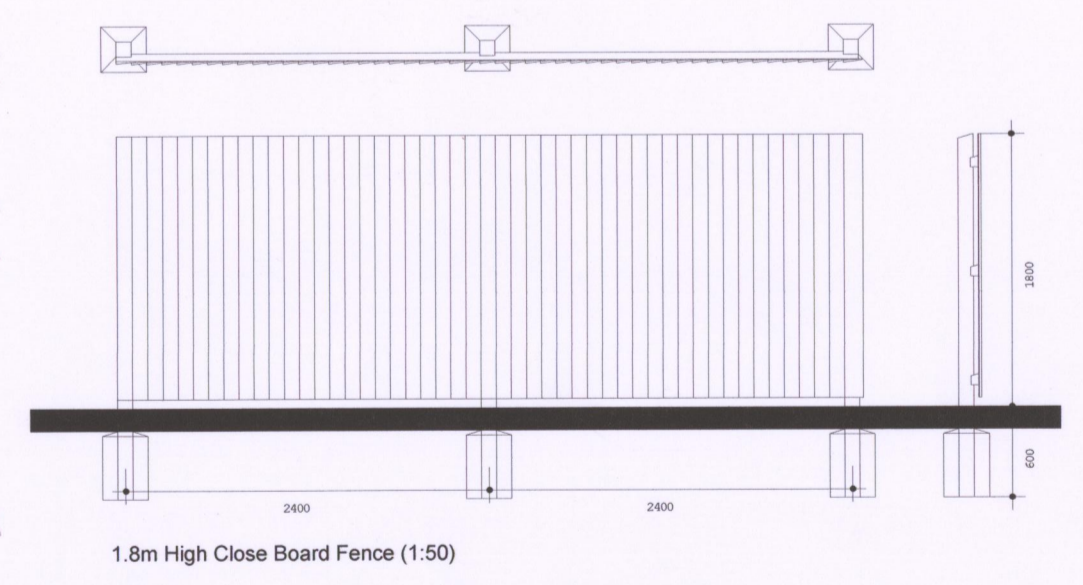
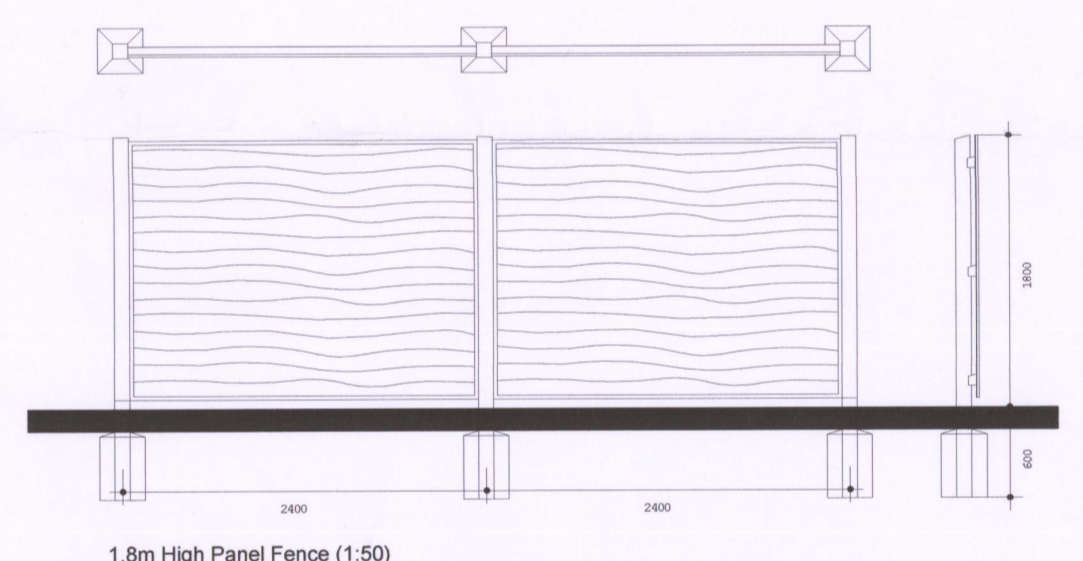
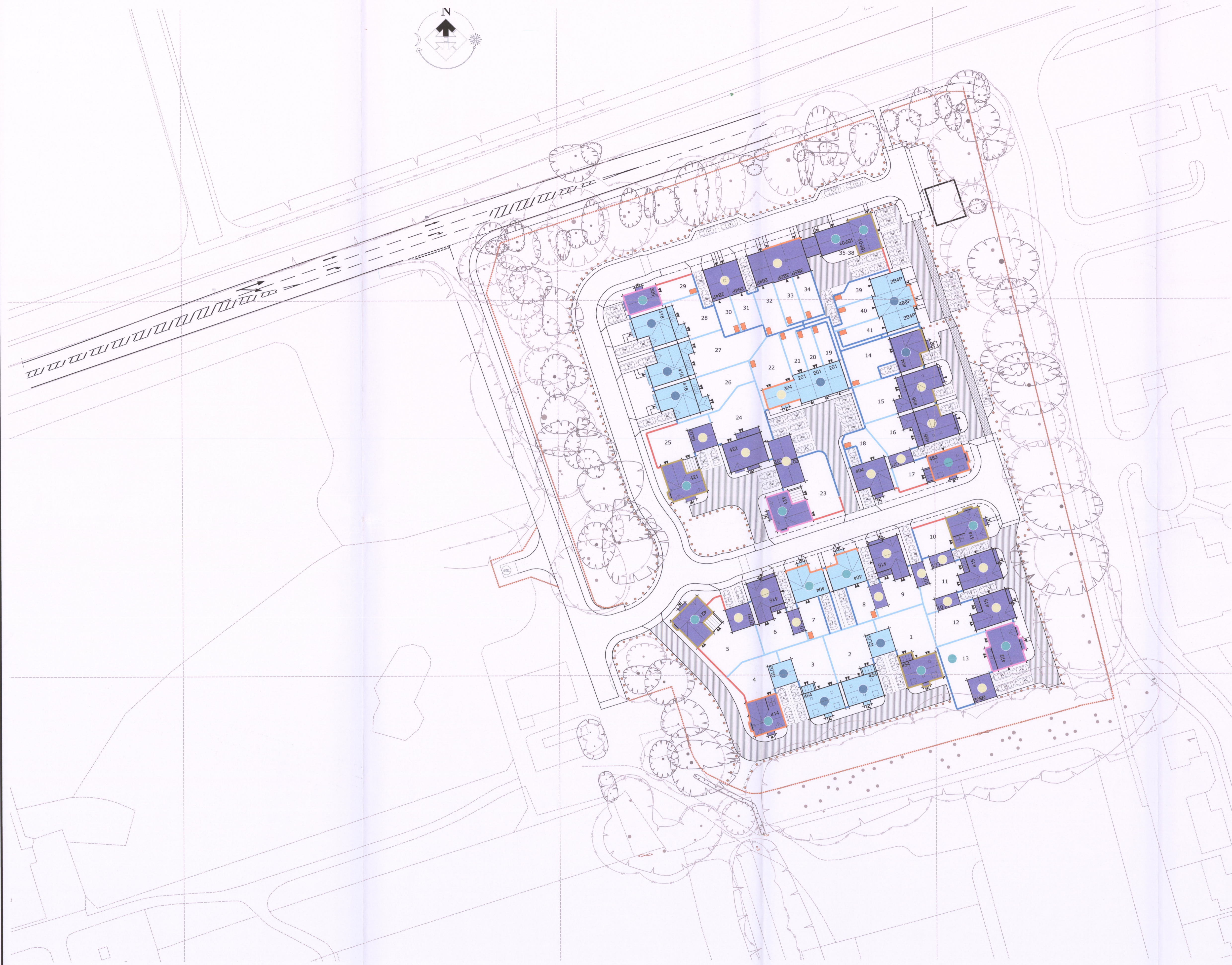
- MARLEY - ASHMORE SMOOTH GREY
- SANDTOFT - SHIRE TERRACOTTA
- SANDTOFT - SHIRE DARK GREY

**RENDER (MONOCOUCHE)**

- ROSE (plots 13, 23, 29)
- PARCHMENT (plots 4, 7, 8, 17, 22, 33, 34, 40)
- IVORY (plots 1, 5, 10, 14, 25, 36/38)

**BOUNDARY TREATMENTS**

- 1.8m HIGH CLOSE BOARD FENCE
- 1.8m HIGH PANEL FENCE
- 1.8m BRICK SCREEN WALL
- 0.450m HIGH TIMBER BOLLARD (POSITIONED AT 1.5m SPACING)
- 1.3m HIGH EXISTING TIMBER POST & RAIL FENCE (SECTION ALONG WESTERN BOUNDARY TO BE RELOCATED TO SUIT NEW ACCESS ROAD ALIGNMENT)



RECEIVED  
19 AUG 2014

Rev	Description	Int	Date
B	inner loop of existing 1.3m site boundary fence removed as requested by landscape officer Jaki Fisher.	AMG	12.08.14
A	Cycle and pedestrian link incorporated along private drive in front of plots; 14-17 & 37-41, bollards added to grass verge adjacent to plot 35 parking bay and house types revised to plots; 1-3 & 15-17.	AMG	18.06.14

Site Name: **LANWADES, KENTFORD**

Drawing Title: **MATERIALS & BOUNDARY TREATMENTS**

Scale: 1:500 @ A1  
Date: 10.02.14

Drawn by: AMG  
Check by: JMW

Dwg No: **EA-243-SL-002**  
Rev: **B**

Information  Tender  Construction  AsBuilt

**BLOOR HOMES**

**Bloor Homes Eastern**  
Marauder House, Skyliner Way, Bury St Edmunds, Suffolk, IP32 7YA  
Tel: 01284 752295  
Fax: 01284 752213  
Web: www.bloorhomes.com