

## West Suffolk Joint Health and Safety Panel 30 October 2012

### Employee Accidents and Accidents Involving Members of the Public 2011/2012: Summary

#### 1. Summary and reasons for recommendation

- 1.1 Attached to this report as Appendix A are statistics relating to Employee Accidents and Accidents Involving Members of the Public during the year 2011/2012 for both Forest Heath District Council and St Edmundsbury Borough Council.
- 1.2 These are submitted for the information of the Panel.

#### 2. Recommendation

- 2.1 The Panel are requested to **NOTE** the summary of Employee Accidents and Accidents Involving Members of the Public for the year 2011/2012.

#### Contact details

Name

Title

Telephone

E-mail

#### Portfolio holders

David Ray

Portfolio Holder for

Performance & Resources

01359 250912

[david.ray@stedsbc.gov.uk](mailto:david.ray@stedsbc.gov.uk)

Stephen Edwards

Portfolio Holder for

Resources, Governance &  
Performance

01638 660518

[stephen.edwards@forest-heath.gov.uk](mailto:stephen.edwards@forest-heath.gov.uk)

#### Lead officer

Martin Hosker

Health and Safety Manager

01284 757010

[martin.hosker@stedsbc.gov.uk](mailto:martin.hosker@stedsbc.gov.uk)

### **3. Corporate priorities/Strategic Priorities**

- 3.1 The recommendation(s) meet the following, as contained within the Corporate Plan:
- (a) Corporate priority: *'working together for an efficient council'*; and
  - (b) Strategic priority: *'being an efficient and effective Council'*.

### **4. Key issues**

- 4.1 Accident /incident reports are completed every time there is an accident or incident at work involving a member of staff, or a member of the public on our premises.
- 4.2 RIDDOR reports have to be submitted to the Health and Safety Executive (HSE) whenever there is:
- (i) death;
  - (ii) a serious injury;
  - (iii) amputation;
  - (iv) loss of sight, permanent or temporary;
  - (v) someone is taken to hospital and is admitted for more than 24 hours;
  - (vi) a member of staff is not seriously injured, but spends more than 7 days off work as a result of that injury;
  - (vii) illness that resulted from exposure to a biological agent, or its toxins or infected material; and
  - (viii) acute illness or loss of consciousness arising from absorption of any substance by inhalation, ingestion or through the skin.
- 4.3 These incident reports are read by the Health and Safety Manager to identify accident trends, if any, and to put in place measures to mitigate further injury.

### **5. Other options considered**

- 5.1 N/A

### **6. Community impact**

- 6.1 **Crime and disorder impact** *(including Section 17 of the Crime and Disorder Act 1998)*

- 6.1.1 N/A

- 6.2 **Diversity and equality impact** *(including the findings of the Equality Impact Assessment)*

- 6.2.1 N/A

- 6.3 **Sustainability impact** *(including completing a Sustainability Impact Assessment)*

- 6.3.1 N/A

- 6.4 **Other impact** *(any other impacts affecting this report)*

- 6.4.1 N/A

**7. Consultation** *(what consultation has been undertaken, and what were the outcomes?)*

7.1 The accident statistics were discussed at the Joint Health & Safety Group on the 10 May 2012.

**8. Financial and resource implications** *(including asset management implications)*

8.1 N/A

**9. Risk/opportunity assessment** *(potential hazards or opportunities affecting corporate, service or project objectives)*

Risk area	Inherent level of risk (before controls)	Controls	Residual risk (after controls)
N/A	High/Medium/Low		High/Medium/Low

**10. Legal and policy implications**

10.1 It is a legal requirement under health and safety legislation to maintain a safe working environment for all staff and users of our facilities. Reporting of injuries under RIDDOR is a requirement of the Health and Safety at Work etc Act 1974. The main purpose of the regulations is to generate reports to the HSE and to Local Authorities (enforcing authorities) alerting those to serious accidents or incidents, so they can be investigated and action taken to prevent reoccurrence.

**11. Ward(s) affected**

11.1 All

**12. Background papers**

12.1 N/A

**13. Documents attached**

13.1 Appendix A – Statistics relating to Employee Accidents and Accidents involving Members of the Public during the year 2011/2012.

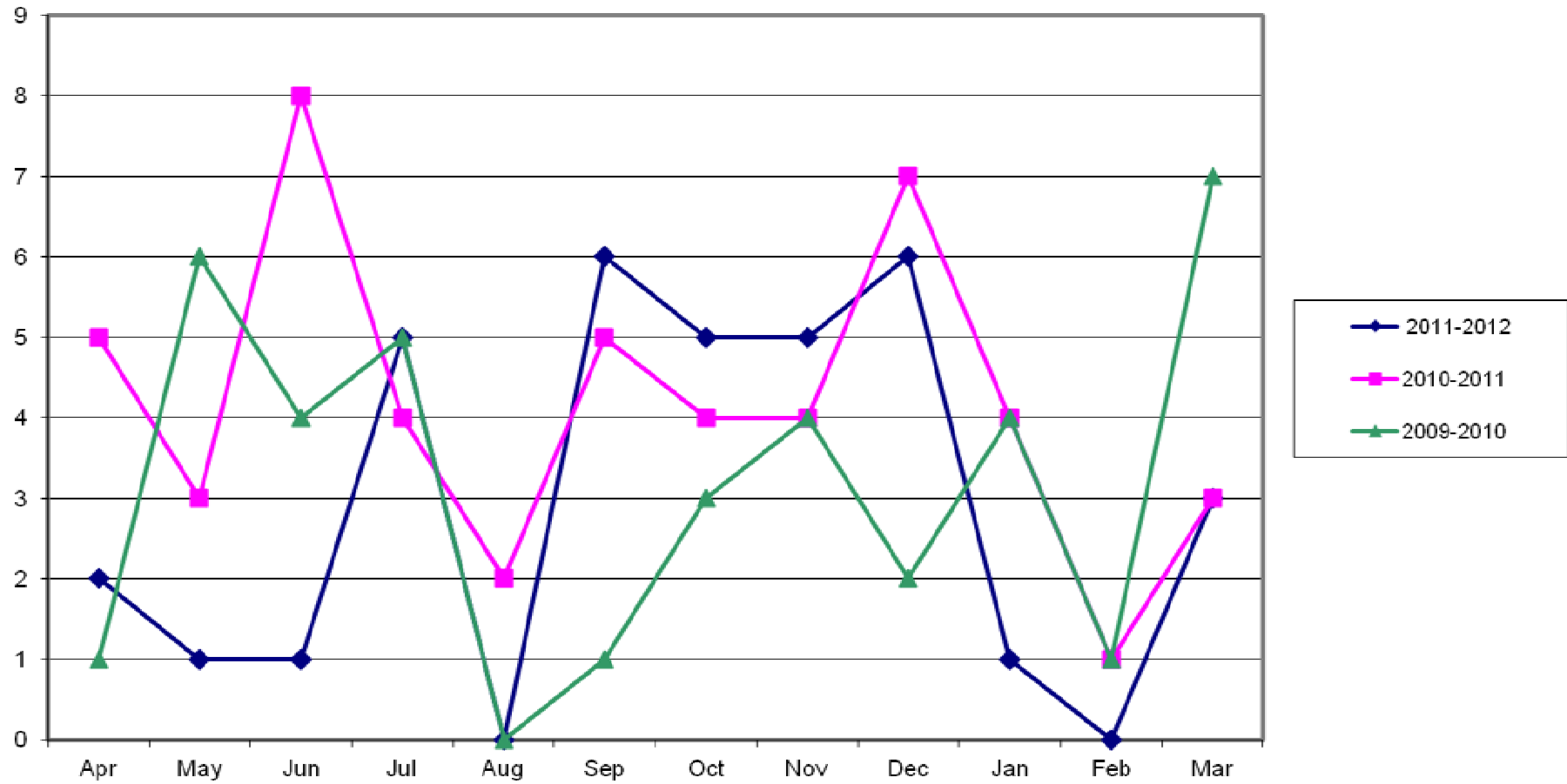
## Summary of EMPLOYEE accidents 2011/2012

	April	May	June	July	Aug	Sep	Oct	Nov	Dec	Jan	Feb	Mar	TOTAL
Contact with moving machinery													0
Hit by moving object	1					2	1						4
Hit by moving vehicle						1						1	2
Hit something fixed or stationary				1			1						2
Manual Handling						1							1
Slipped, Tripped or fell	1	1	1	4		2	1		6		0	1	17
Exposed to a harmful substance													0
Injured by an animal													0
Violence at work/ verbal abuse against staff							2	3					5
Another kind of accident								1				1	2
Technique													0
Dangerous occurrence													0
Disease													0
Near Miss/ Dangerous Condition										1			1
Road Traffic Accident													0
Ill health								1					1
<b>Total accidents</b>	<b>2</b>	<b>1</b>	<b>1</b>	<b>5</b>	<b>0</b>	<b>6</b>	<b>5</b>	<b>5</b>	<b>6</b>	<b>1</b>	<b>0</b>	<b>3</b>	<b>35</b>

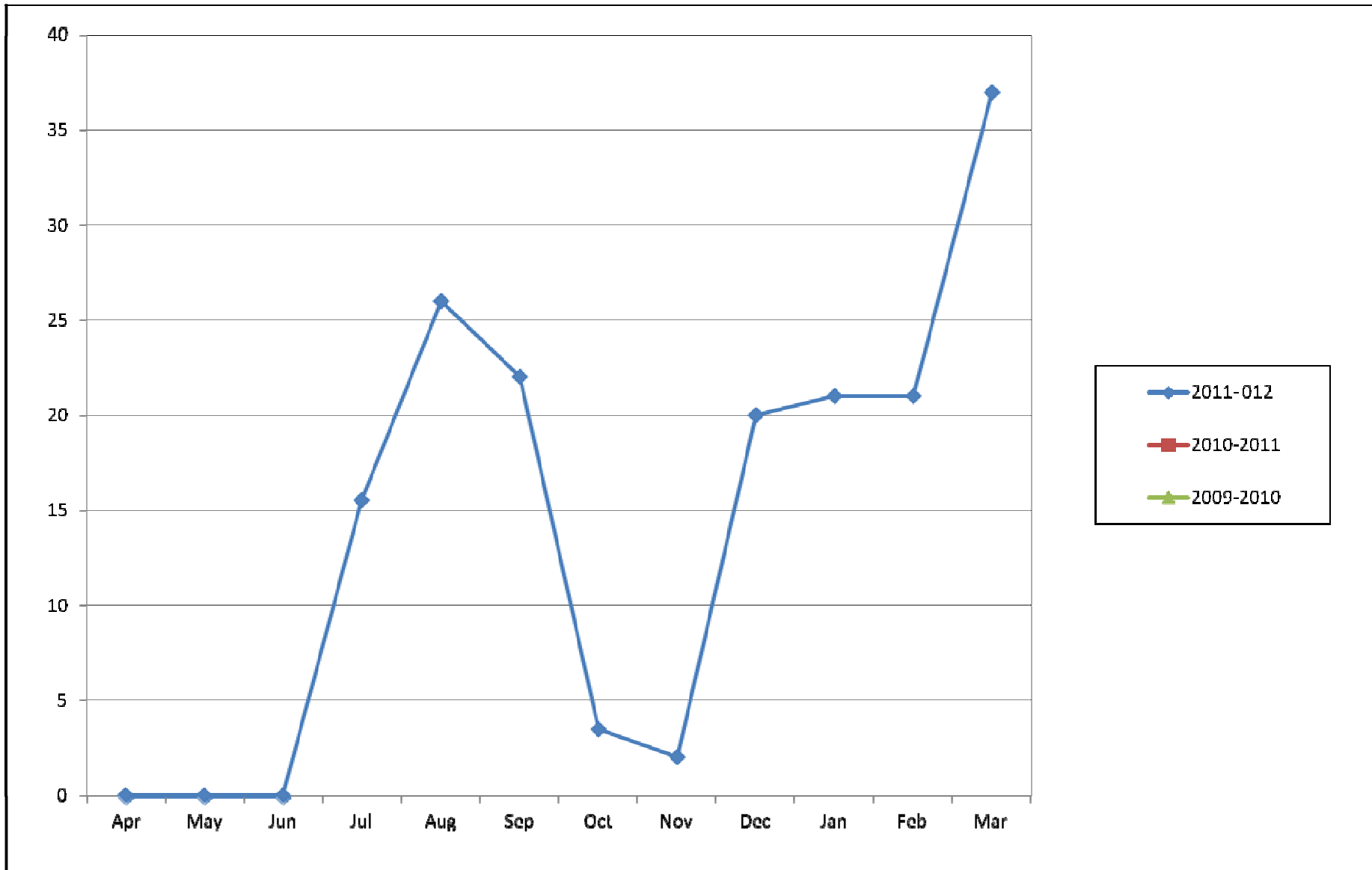
## Total Number of Days Lost for 2011/2012

	April	May	June	July	Aug	Sep	Oct	Nov	Dec	Jan	Feb	Mar	TOTAL
Contact with moving machinery													0
Hit by moving object						3							3
Hit by moving vehicle													0
Hit something fixed or stationary				3.5			3.5						7
Manual Handling													0
Slipped, Tripped or fell				12	26	19		2	20	21	21	37	158
<b>Total days</b>	<b>0</b>	<b>0</b>	<b>0</b>	<b>15.5</b>	<b>26</b>	<b>22</b>	<b>3.5</b>	<b>2</b>	<b>20</b>	<b>21</b>	<b>21</b>	<b>37</b>	<b>168</b>

Forest Heath District Council Staff Accidents/Incidents  
2011-2012

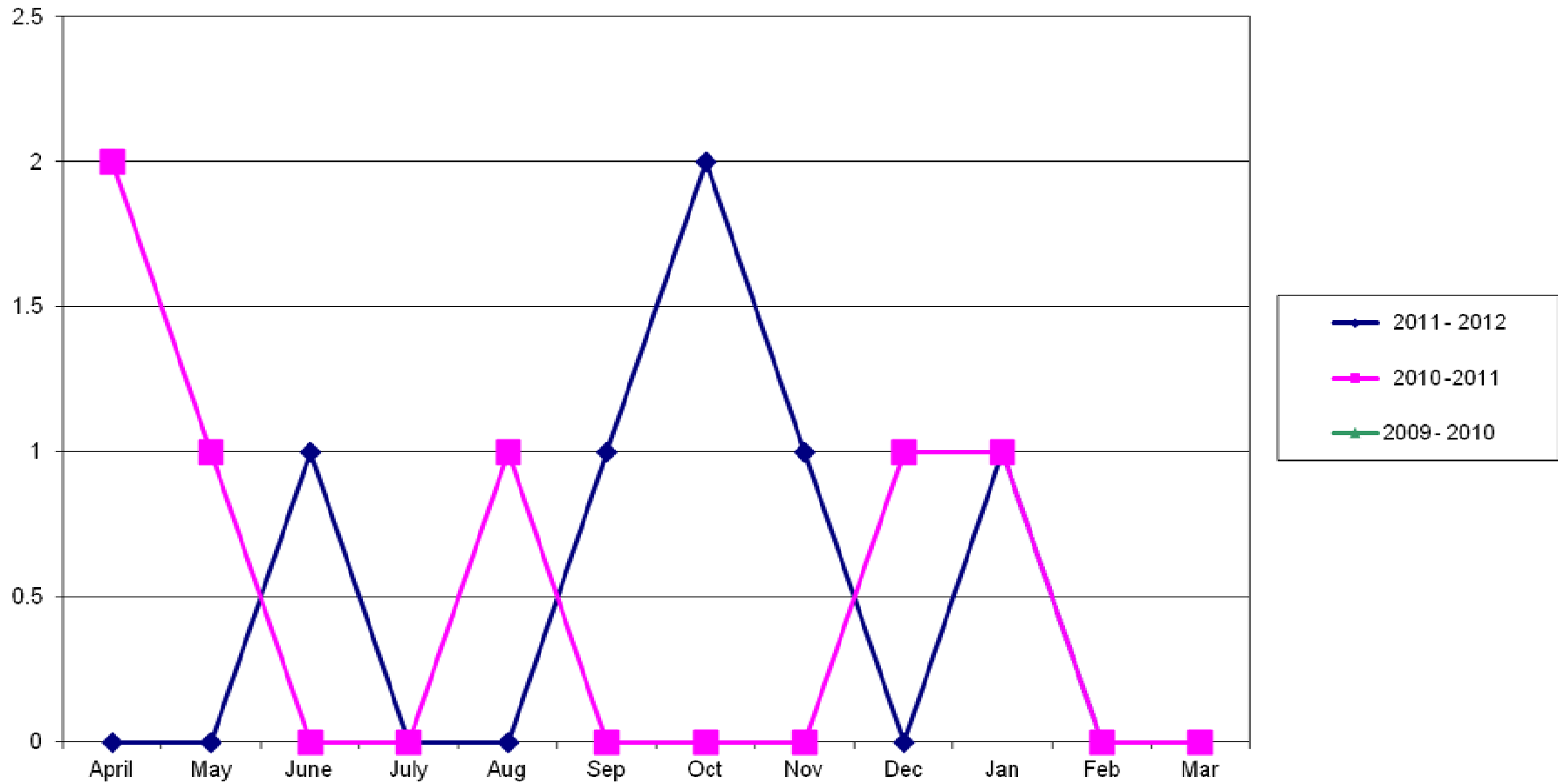


### Forest Heath Staff Days Lost 2011-2012





Forest Heath District Council Public Accidents 2010-12





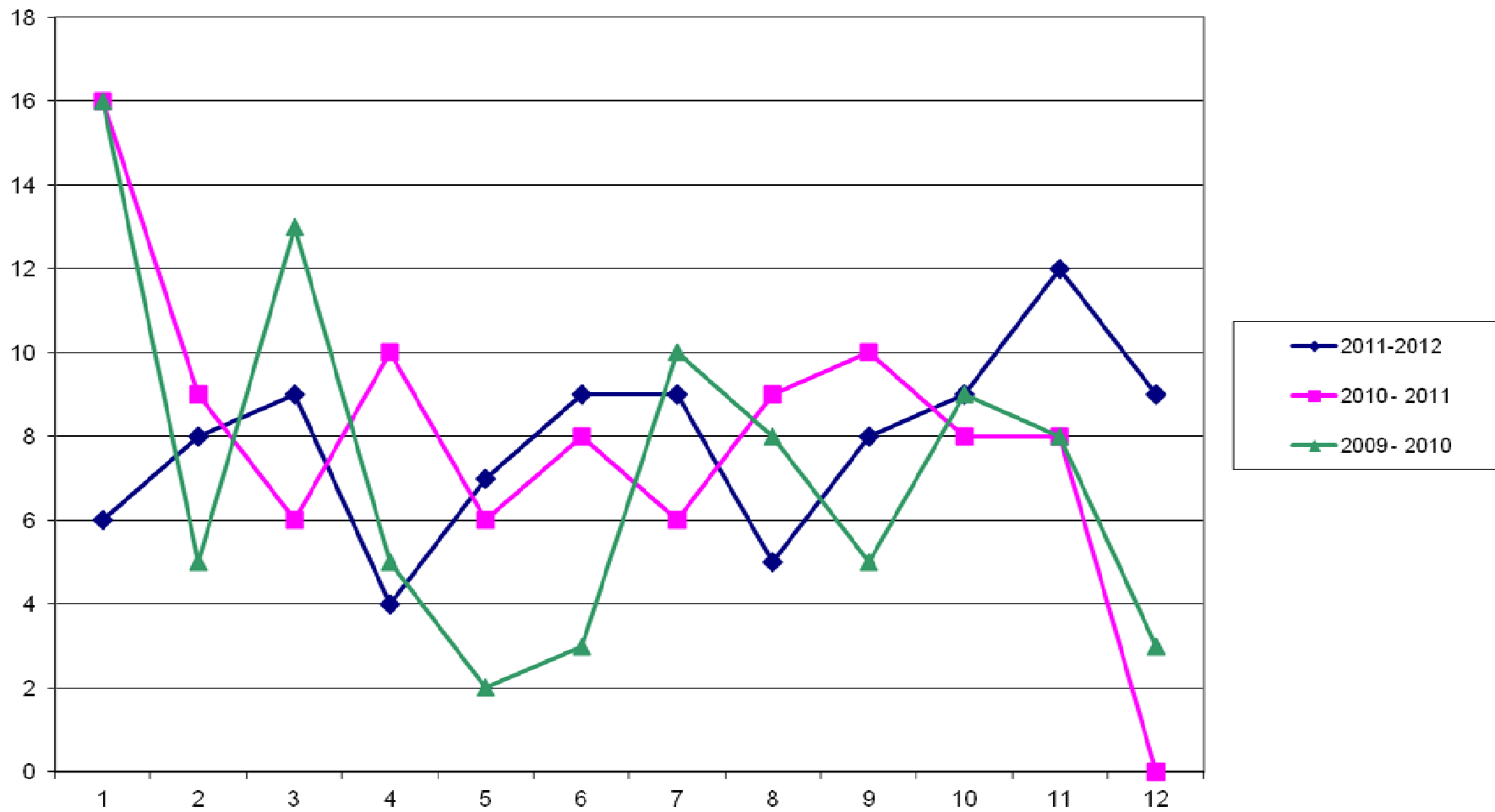
### Summary of EMPLOYEE accidents 2011/2012

	April	May	June	July	Aug	Sep	Oct	Nov	Dec	Jan	Feb	Mar	TOTAL
Contact with moving machinery													
Hit by moving object	3	1			1			1			3	1	10
Hit by moving vehicle													
Hit something fixed or stationary	2	1	1	1	2					1	1		9
Manual Handling		1				2				1		1	5
Slipped, Tripped or fell		3	4	2	1	2	2	2	5	3	5	2	31
Exposed to a harmful substance											1		1
Injured by an animal		1	1			1							3
Violence at work/ verbal abuse against staff			1		2	3	2		2			2	12
Another kind of accident		1	2	1		1	5	2		2	2	3	19
Technique	1												1
Dangerous occurrence													
Disease													
Near Miss/ Dangerous Condition					1				1	2			4
Road Traffic Accident													
<b>Total accidents</b>	<b>6</b>	<b>8</b>	<b>9</b>	<b>4</b>	<b>7</b>	<b>9</b>	<b>9</b>	<b>5</b>	<b>8</b>	<b>9</b>	<b>12</b>	<b>9</b>	<b>95</b>

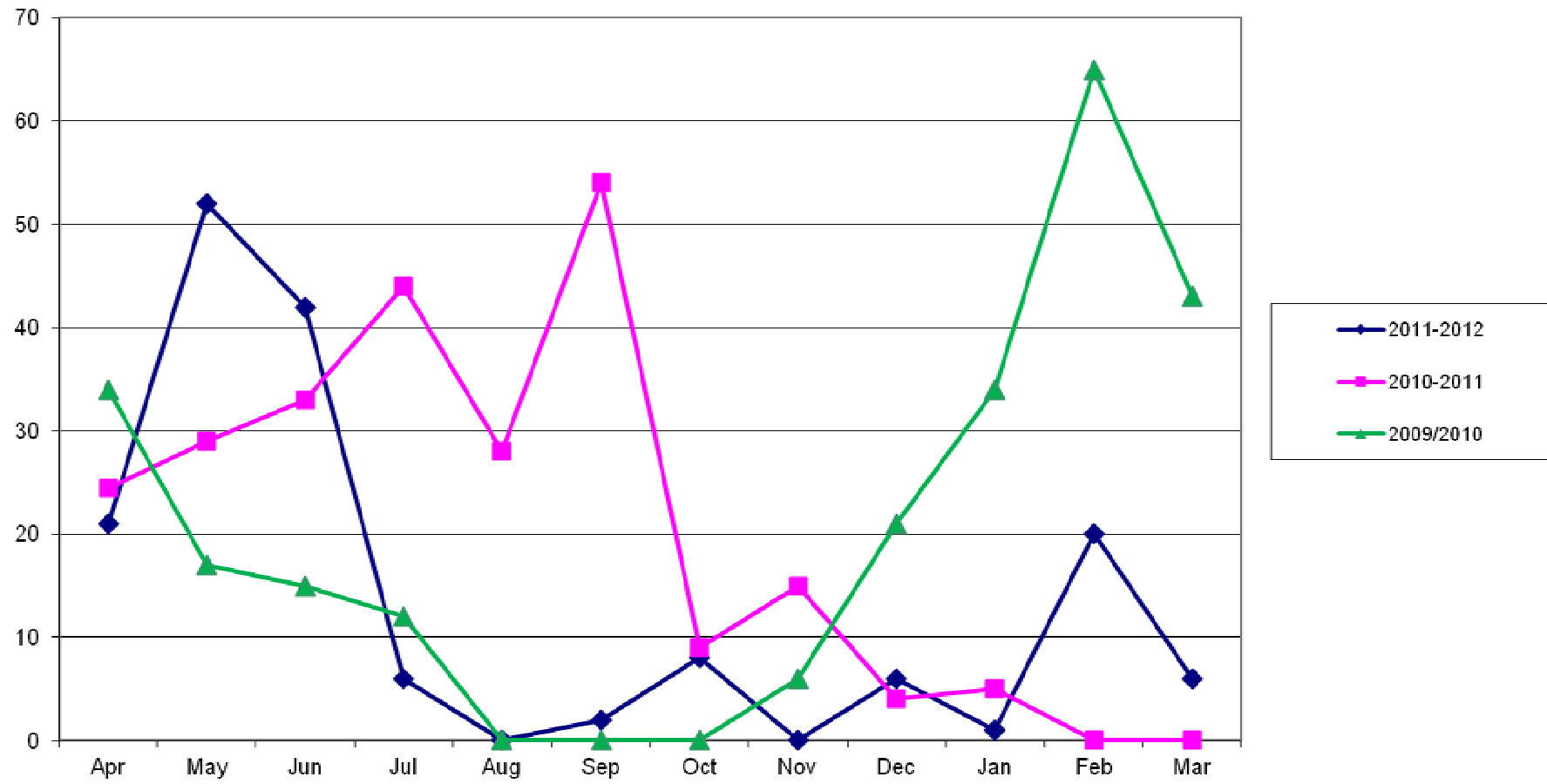
### Total Number of Days Lost for 2010/2011

	April	May	June	July	Aug	Sep	Oct	Nov	Dec	Jan	Feb	Mar	TOTAL
Contact with moving machinery													
Hit by moving object	11	23	4										38
Hit by moving vehicle													
Hit something fixed or stationary	10												10
Manual Handling						1							1
Slipped, Tripped or fell		29	35	6			8		6	1	20	6	111
Another kind of accident			3										3
<b>Total days</b>	<b>21</b>	<b>52</b>	<b>42</b>	<b>6</b>	<b>0</b>	<b>2</b>	<b>8</b>	<b>0</b>	<b>6</b>	<b>1</b>	<b>20</b>	<b>6</b>	<b>164</b>

St Edmundsbury Staff Accidents/Incidents 2011-2012



St Edmundsbury Staff Days Lost 2011-2012



**Public Accidents St Edmundsbury 2011 - 2012**

<b>LOCATION</b>	<b>Apr</b>	<b>May</b>	<b>Jun</b>	<b>Jul</b>	<b>Aug</b>	<b>Sep</b>	<b>Oct</b>	<b>Nov</b>	<b>Dec</b>	<b>Jan</b>	<b>Feb</b>	<b>Mar</b>	<b>TOTAL</b>
Abbey Gardens		1											1
Abbey Gardens Toilets													
East Town Park													
Corn Exchange													
West Stow Country Park				1									1
West Suffolk House			1			1							2
All Car Parks												1	1
Athenaeum	2							1					3
Moyses Hall													
WSH Car parks													
Great Churchyard											1		1
Nowton Park	3		8					1					12
Chalkstone Centre HH													
Bury Depot													
Haverhill Town Centre					1								1
Parkway													
Bury Town Centre	1			1						1			3
The Apex						2					2	1	5
Angel Hill													
Bus Station								1			1		2
Haverhill Offices			1										1
Hardwick Heath					1	1							2
Street								1					1
<b>TOTAL</b>	<b>6</b>	<b>1</b>	<b>10</b>	<b>2</b>	<b>2</b>	<b>4</b>	<b>0</b>	<b>4</b>	<b>0</b>	<b>1</b>	<b>4</b>	<b>2</b>	<b>36</b>

Children - Non Sporting					1								1
General Accidents	2		9			1		1			1	1	15
Slips, Trips, Falls, Bumps	4	1	1	2	1	2		3		1	3	1	19
Sub-Contractor Accidents													
Dangerous Occurrence													
Ill health						1							1
<b>TOTAL</b>	<b>6</b>	<b>1</b>	<b>10</b>	<b>2</b>	<b>2</b>	<b>4</b>	<b>0</b>	<b>4</b>	<b>0</b>	<b>1</b>	<b>4</b>	<b>2</b>	<b>36</b>

Public Accidents 2011-2012

