

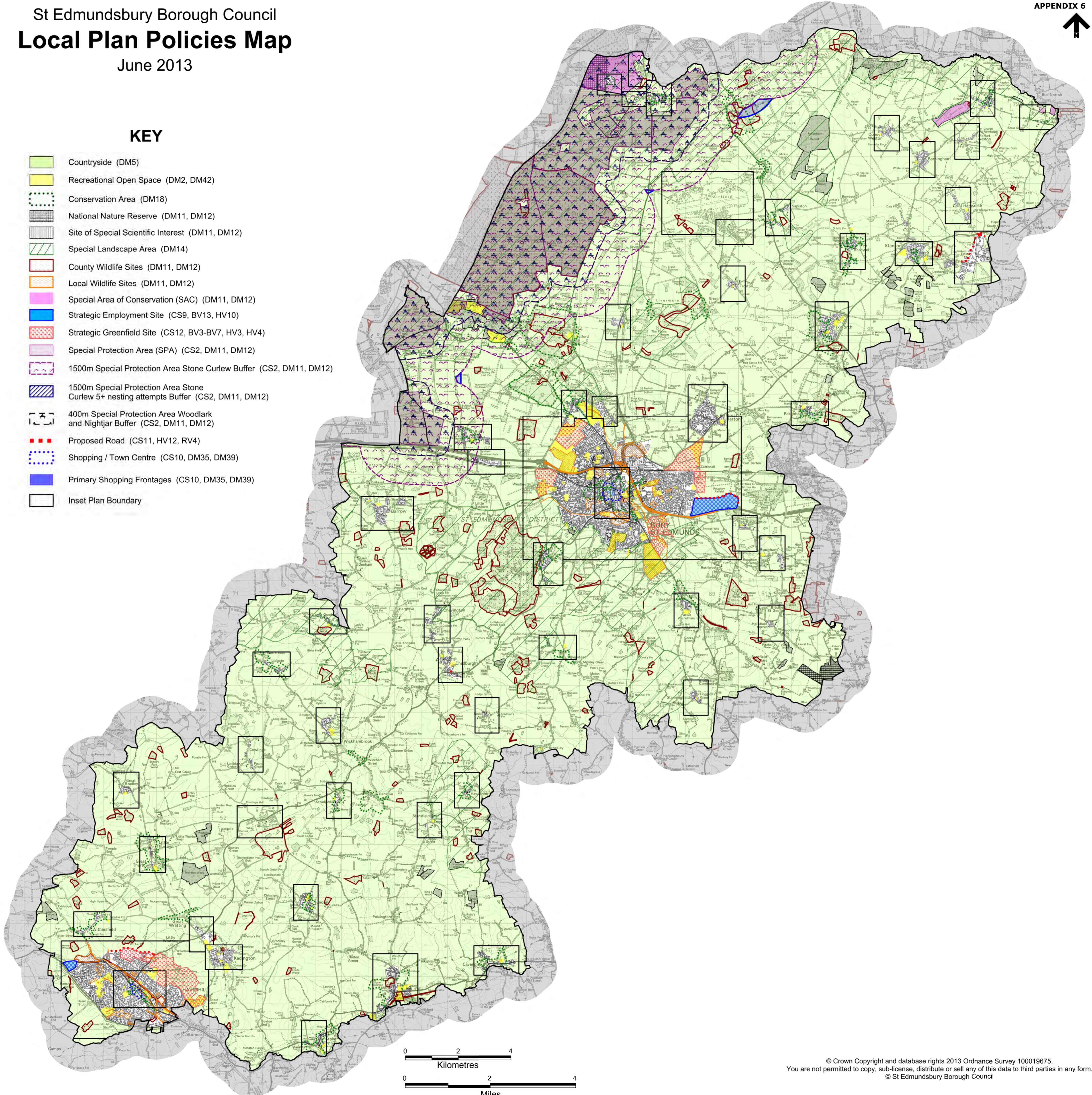
St Edmundsbury Borough Council Local Plan Policies Map

June 2013



KEY

-  Countryside (DM5)
-  Recreational Open Space (DM2, DM42)
-  Conservation Area (DM18)
-  National Nature Reserve (DM11, DM12)
-  Site of Special Scientific Interest (DM11, DM12)
-  Special Landscape Area (DM14)
-  County Wildlife Sites (DM11, DM12)
-  Local Wildlife Sites (DM11, DM12)
-  Special Area of Conservation (SAC) (DM11, DM12)
-  Strategic Employment Site (CS9, BV13, HV10)
-  Strategic Greenfield Site (CS12, BV3-BV7, HV3, HV4)
-  Special Protection Area (SPA) (CS2, DM11, DM12)
-  1500m Special Protection Area Stone Curlew Buffer (CS2, DM11, DM12)
-  1500m Special Protection Area Stone Curlew 5+ nesting attempts Buffer (CS2, DM11, DM12)
-  400m Special Protection Area Woodlark and Nightjar Buffer (CS2, DM11, DM12)
-  Proposed Road (CS11, HV12, RV4)
-  Shopping / Town Centre (CS10, DM35, DM39)
-  Primary Shopping Frontages (CS10, DM35, DM39)
-  Inset Plan Boundary



0 2 4
Kilometres

0 2 4
Miles