

**Forest Heath District Council
St Edmundsbury Borough Council**

**WEST SUFFOLK WASTE
AND STREET SCENE
SERVICES JOINT
COMMITTEE**

22 OCTOBER 2010

JWC10/028

**Report of the Strategic Director (Services) (FHDC)
and the Corporate Director (Economy & Environment)
(SEBC)**

PROGRESS ON DELIVERING THE 2010/11 JOINT WASTE SERVICE PLAN

Synopsis:

This paper updates the Joint Committee on progress made against the key tasks in the 2010/11 Joint Service Plan and the related key performance indicators.

Background

- 1 At the meeting of the West Suffolk Waste and Street Scene Services Joint Committee on 26 March 2010, Members approved the Joint Service Plan for 2010/11 (paper JWC10/A593). The Joint Service Plan is intended to aid the integration of service delivery and enable the Joint Committee to manage the delivery of services in accordance with the Partnering Agreement.
- 2 As part of the approval, both councils agreed to adopt the following vision and purpose:

“....to work in partnership and with others to deliver high quality sustainable waste and street scene services that maintains and improves the local environment for the benefit of the community.

Through:

 - working together
 - providing value for money
 - delivering highly efficient, responsive & accessible services
 - striving for continuous improvement”
- 3 Underpinning this is a range of projects with associated milestones and a suite of national and local performance indicators.
- 4 At the meeting of the West Suffolk Waste and Street Scene Services Joint Committee on 10 June 2010, Members noted the 2009/10 performance of both authorities and the actions outlined to improve performance in 2010/11 (paper JWC10/026).

- 5 This report is intended to advise Members of interim progress of the partnership activities.

Progress to date

- 6 Performance of the Joint Waste Partnership is monitored and measured in relation to the following:
- a. The Service Plan actions and milestones; and
 - b. Performance against the national performance indicators and agreed targets.

The Service Plan actions and milestones

- 7 Table 1 below provides a summary of the interim progress (up to August 2010) against the nine service plan actions adopted for 2010/2011.

Table 1 – Summary of progress against the 2010/11 Service Plan

	ACTION	TARGET	PROGRESS
1	Further progression of the joint partnership including work towards developing a more unified management structure and integrated ways of working.	January 2011	Ongoing
2	Review of collection rounds to identify and implement the changes required to meet the new SCC contract for the disposal of residual waste.	June 2010	Completed
3	Investigate opportunities for efficiency savings across all waste and street scene service areas.	March 2011	Ongoing
4	Review of procurement activities and implementation of a joint process for the procurement and management of bin stocks.	March 2011	Project under trial
5	Review of the delivery of the individual trade waste services and the development of an action plan to maximise income and diversion and ensure Diversion Incentive Fund targets are met.	March 2011	Individually pursuing business development opportunities
6	Review and alignment of bring site contracts to upgrade the facilities and ensure regular site maintenance.	March 2011	Project rescheduled as agreed by the Suffolk Waste Partnership
7	Development of phase two of the No Excuses campaign and the development of a strategy for the enforcement of litter offences.	January 2011	Limited action taken
8	Investigation of opportunities to introduce food waste collections.	June 2011	Awaiting confirmation of contractor timeline
9	Composting and recycling of street sweepings	March 2011	Project under trial

8 **Appendix A** includes the detailed progress against the individual project milestones. Where the original timescale has not been achieved or additional work is required, this has been highlighted.

9 The key area of progress to note are:

- The development of the interim joint waste management structure has been implemented.
- Successful completion and implementation of the collection round review. This project was delivered on budget, within the agreed timescale and with minimum disruption for residents (78,000 households).
- A trial for the diversion of street sweepings has commenced with 285 tonnes diverted from landfill.
- A joint policy and approach for managing staff sickness has been agreed and implemented, using a joint HR partner as agreed through the interim HR structure.
- A joint policy and approach (including safe systems of work, risk assessments etc) for managing occupational health and safety is being developed and implemented. The Health and Safety Executive are currently commencing a programme of local authority inspections to check that they are clear on their health and safety responsibilities in procuring and managing waste and recycling services.
- We have commenced work streams to develop further opportunities for joint working on wheeled bin procurement, fleet management (procurement and management), waste data management and our strategic and operational approach to street cleansing.
- We are commencing a Suffolk wide “Suffolk Streets Ahead” project to determine the effectiveness of measures to encourage residents to reduce waste and recycle more.
- A Suffolk wide compositional and behavioural analysis of household waste is being coordinated and supported by FHDC and SEBC.

10 Key areas to note are:

- Limited progress developing the No Excuses campaign although our approach to enforcement and education will be reviewed as part of the street cleansing project.
- In light of the Suffolk Waste Partnership approach to the bring site project, we will review our current contractual arrangements to ensure they are robust in the short term.

- We intend to continue negotiations and investigations into the development of food waste diversion from landfill and opportunities to increase value from trade waste services.

Performance against the national performance indicators and agreed targets

- 11 Tables 2 and 3 below outline the national indicators that relate to waste and street cleansing services for Forest Heath and St Edmundsbury for the period 1 April 2010 to 31 August 2010 inclusive. The targets for 2010/11 are listed along with data for 2008/09 and 2009/10 to show performance compared with targets and the previous two years' performance.
- 12 **Appendix B** (Charts B1 and B2) details the profiled waste recycling progress against the same period in 2009/10 for both councils. Figures B1 and B2 details the current environmental cleanliness performance for both councils.
- 13 **Appendix C** provides the 2010/11 quarter 1 summary performance for the Suffolk Waste Partnership.

Table 2 – Forest Heath Performance Data (based on National Indicators)

NI	Definition	2008/09 Actual	2009/10 Actual	2010/11 Target	2009/10	2010/11	Comment on Performance
					Apr - Aug		
NI 191	kg of residual waste collected per household	502kg	505kg	500kg	204.79	189.29	Improvement
NI 192	% of household waste recycled and composted	46.53%	45.20%	46%	49.84	49.41	Improvement
NI 193	% of municipal waste sent to landfill	57%	58.40%	55%	54.45	55.16	Reduction
NI 195a	Improved street and environmental cleanliness (litter)	4%	6%	6%	4%	4%	Consistent
NI 195b	Improved street and environmental cleanliness (detritus)	10%	15%	16%	19%	16%	Improvement
NI 195c	Improved street and environmental cleanliness (graffiti)	0%	0%	1%	0%	0%	Consistent
NI195d	Improved street and environmental cleanliness (fly-posting)	0%	0%	1%	0%	0%	Consistent
NI 196	Improved street and environmental cleanliness (fly-tipping)	Effective	Very effective	Effective	Very effective	Effective	Reduction

Table 3 – St Edmundsbury Performance Data (based on National Indicators)

NI	Definition	2008/09 Actual	2009/10 Actual	2010/11 Target	2009/10	2010/11	Comment on Performance
					Apr - Aug		
NI 191	kg of residual waste collected per household	488kg	481kg	478kg	477kg*	467kg*	Improvement
NI 192	% of household waste recycled and composted	51.30%	50.10%	52%	55.24%	53.91%	Reduction
NI 193	% of municipal waste sent to landfill	53%	53.24%	52%	49.67%	51.34%	Reduction
NI 195a	Improved street and environmental cleanliness (litter)	4%	4%	4%	4%	4%	Consistent
NI 195b	Improved street and environmental cleanliness (detritus)	11%	14%	13%	15%	15%	Consistent
NI 195c	Improved street and environmental cleanliness (graffiti)	3%	3%	3%	3%	3%	Consistent
NI195d	Improved street and environmental cleanliness (fly-posting)	0%	0%	0%	0%	0%	Consistent
NI 196	Improved street and environmental cleanliness (fly-tipping)	Very effective	Very effective	Very effective	Not effective	Effective	Improvement

* Note that FHDC and SEBC figures for NI191 differ for the first 6 months of 2010 as the SEBC method of presenting the figures uses a rolling full year estimate. Both methods are valid in WDF

14 The key issues to note are:

- The annual trend for the generation of household waste forms a similar profile between 2009/10 and 2010/11. There is also consistency in the profile between FHDC and SEBC. Less household waste has been collected to date in 2010/11 than during the same period last year with FHDC collecting 5.9% less (652 tonnes) and SEBC collecting 2.7% less (557 tonnes).
- Waste recycling/composting performance to date in 2010/11 is similar to the same period last year, although there is slightly less waste being recycled and composted. There key points to note are:
 - The quantity of waste recycled through the blue bin has marginally increased in FHDC and SEBC - on average by 1% (18 tonnes and 23 tonnes respectively).
 - The range of recycling activity at recycling centres is consistent with the same period in 2009/10 although there is a slight drop in performance. The reduction equates to 10.3% (73 tonnes) for FHDC and 4.4% (40 tonnes) for SEBC.
 - Green waste collections have had the most significant impact on overall waste diversion performance, with a reduction in the quantity of green waste collected during each month to date during 2010/11 when compared with 2009/10. The reduction equates to 9.6% (308 tonnes) for FHDC and 9.2% (606 tonnes) for SEBC.
- Recycling and composting performance will reduce over the remainder of the year due to the expected reduction of green waste collected.
- Overall to date, the quantity (by weight) of household waste recycled and composted has reduced at a greater rate than that landfilled, as outlined below:
 - FHDC:
 - 6.6% reduction in recycling/composting
 - 5.2% reduction in residual waste
 - SEBC:
 - 3.4% reduction in recycling/composting
 - 2.0% reduction in residual waste
- There is ongoing consistency with the performance of FHDC and SEBC with regards to managing environmental cleanliness. For both councils:
 - Graffiti and flyposting performance is positive and is consistent with the national average.
 - Litter and detritus performance is higher than the national average, despite an unsatisfactory rating for detritus.

15 In terms of the overall performance within Suffolk (see Appendix C), the following should be noted:

- From Q1 last year compared to the same period this year, the total residual waste per household across the SWP has decreased by approximately 17kg per household. Some Suffolk councils have experienced a slight increase.
- From Q1 last year compared to the same period this year, the recycling and composting rate across the SWP has increased by approximately 4.5% to 56.1%.
- The use of Energy from Waste to manage residual waste has increased resulting in 30% (16,374 tonnes) less residual waste being landfilled.
- There is relative consistency across the SWP in terms of managing fly tipping and environmental cleanliness.

Development of Performance Management

- 16 Currently, both authorities monitor and report performance to differing timescales and systems and have adopted individual and different performance targets. However, Officers intend to investigate the development of a more coordinated and consistent approach to performance and data management which will assist the partnership to determine if it is delivering effective services at the most appropriate cost, quality and performance outcome for all residents.
- 17 It is anticipated that this will also deliver consistency in data recording systems and result in leaner and efficient processes. In addition, this will enable both authorities to jointly compare and benchmark the performance of the partnership with similar councils and assist in the development of a more targeted approach to education and enforcement activity, waste policy and strategy development and potential business opportunities.
- 18 As part of the shared Services programme, the adoption and use of the Covalent data management system will be support this process.

Key impacts on delivering the Service Plan and performance improvement actions

- 19 The recent collection round review project, which commenced to accommodate Suffolk County Council's changes to the residual waste tipping locations, required significant input from key officers. This in turn has had an impact on the delivery of some of the key tasks and initiatives identified within the service plan.

Finance/Budget/Resource Implications

- 20 To date there have been no financial or resource implications as all the key tasks have been delivered within existing budgets.
- 21 The progression of the waste partnership, including the recent changes to the staff organisational structure, is expected to provide financial savings in the long term.

Environmental Impact and Sustainability

- 22 The Joint Service Plan actions aim to contribute positively to the provision of sustainable waste and street scene service.
- 23 The performance achieved and targets set will aim to reduce the total amount of waste sent to landfill through increasing the amount of waste available for re-use, recycling and composting. Furthermore, the provision of an effective street scene service will maintain high environmental standards and protect local amenity.
- 24 In the delivery of services, opportunities to reduce carbon emissions will be identified and investigated.

Policy Compliance/Power

- 25 There are no policy compliance issues associated with this report.
- 26 The Joint Service Plan requirements are in line with the Partnering Agreement and will support both council policies and objectives.
- 27 The service plan supports the vision and actions of the Joint Municipal Waste Management Strategy for Suffolk and the key principals set out in the Inter Authority Agreement for Suffolk's waste management services.
- 28 As part of the data quality and verification processes, both councils collate, record and monitor statistical information to the required standard. At present both councils are required to report information for the national indicators independently and this will continue.

Performance Management Implications

- 29 The performance data outlined in this report refer to national indicators reported by both councils.

Legal Implications

- 30 There are no legal implications associated with this report.

Human Rights Act and Diversity Implications

- 31 There are no human rights or diversity implications associated with this report.

Crosscutting Implications

- 32 The successful completion of the service plan actions is dependant on support from other council services.

Risk Assessment

- 33 The targets for 2010/11 have been set following consideration by officers and have received Member approval.

- 34 The planned enhancements are outlined in the Joint Service Plan and have been individually risk assessed.
- 35 Performance will be reported quarterly to the Joint Committee to monitor progress and ensure that targets are being achieved.

Council Priorities

- 36 The Joint Service Plan contributes to the following priorities:

Forest Heath:

- Community engagement and communication;
- Community safety; and
- Street scene and environment.

St Edmundsbury:

- Raise standards and corporate efficiency;
- Improve the safety and well being of the community; and
- Secure a sustainable and attractive environment.

Recommendation:

- 37 It is recommended that Members note:

1. **Progress made to date against the projects identified in the Joint Service Plan 2010/11; and**
2. **Current performance in relation to the national performance indicators.**

Documents Attached

Appendix A – Progress against Service Plan 2010/11 Actions
Appendix B – Household Waste and Environmental Cleanliness Progress
Appendix C – Progress of the SWP

Nigel McCurdy
Strategic Director (Services)
14 October 2010

Sandra Pell
Corporate Director (Economy & Environment)
14 October 2010

CONTACT OFFICERS

Mark Christie
Mike Culver
Lee Williams

Progress against Service Plan 2010/11 actions**APPENDIX A**

Action 1: Further progression of the joint partnership including work towards developing a more unified management structure and integrated ways of working.		
Milestone	Completion Date	Progress/Outcome
Development of partnership working between both authorities through establishing more joint roles	Ongoing	<ul style="list-style-type: none"> The development of the interim joint waste management structure was reported and agreed at the Joint Waste Committee in March 2010 (paper A593).
Development of further interim joint management structure for the waste partnership	Completed January 2010	
Embedding of joint roles with increased cross organisation working.	Ongoing	<ul style="list-style-type: none"> The restructure identified key joint roles across the two authorities which has been a catalyst for officers to work closer together. Officers are working closer together, allowing for a greater efficiency in completing joint tasks.
Alignment of departmental and corporate policies and procedures.	January 2011	<ul style="list-style-type: none"> We have now adopted joint policies and procedures for managing the following: <ul style="list-style-type: none"> Staff disciplinary and sickness management Occupational health and safety. It is also planned that waste collection and street cleansing procedures become aligned as a result of the completed round review and the forthcoming cleansing review.

Action 2: Review of collection rounds to identify and implement the changes required to meet the new SCC contract for the disposal of residual waste.		
Milestone	Completion Date	Progress/Outcome
Purchase route optimisation software and vehicle real time tracking equipment	Completed January 2009	<ul style="list-style-type: none"> At the Joint Waste Committee in June 2010, the progress made on the round review project was outlined in paper JWC10/027X. Since this date the new rounds were implemented (28th
Redesign collection rounds.	Completed April 2010	

Develop communications plan and material	Completed April 2010	<p>June 2010) which entailed the successful completion of all the milestones outlined adjacent.</p> <ul style="list-style-type: none"> • The optimisation and redesign changes resulting from the review were successfully communicate to 78,000 households across both authorities. • Service failure during implementation was minimal.
Undertake promotional work and publicise changes.	Completed May 2010	
Commence new collection rounds.	Completed June 2010	

Action 3 and identified action for 2010/11 Performance Improvement (Cleansing Review): Investigate opportunities for efficiency savings with SEBC across all waste and street scene service areas.

Milestone	Completion Date	Progress/Outcome
Review waste collection, cleansing and enforcement policies across SEBC and FHDC.	October 2010	<ul style="list-style-type: none"> • The strategic policies of the Joint Municipal Waste Management Strategy have been reviewed and adopted by the Suffolk Waste Partnership. • Our waste collection, cleansing and enforcement policies at this time have not yet been reviewed to identify options for alignment. • The completion of the collection round review and forthcoming street cleansing review will help to drive this process forward. • The Coalition Government is currently reviewing national waste policy in England for which we have drafted an initial partnership response. • The outcomes of the review, expected in 2011 will form a basis for officers to begin scoping areas for policy alignment.
Identify further options for joint working.	Ongoing	<ul style="list-style-type: none"> • Immediate further options identified for joint working include the joint collection of bulky waste and the joint delivery of bins. • The implementation of these options is ongoing. The revised pricing strategy for bulky waste in FHDC has resulted in a reduction in service demand by 40%. This

		<ul style="list-style-type: none"> has not resulted in an increase in fly tipping. It has also been identified to align data management procedures including Key Performance Indicators and Waste Data Flow reporting. Officers are scoping opportunities to align the approach to fleet management following a review of fleet expenditure.
Identify improvements and where possible and appropriate develop aligned policies.	March 2011	<ul style="list-style-type: none"> As above and ongoing
Monitor impact of joint working initiatives and changes to policies	Ongoing	<ul style="list-style-type: none"> As above and ongoing

Action 4: Review of procurement activities and implementation of a joint process for the procurement and management of bin stocks.

Milestone	Completion Date	Progress/Outcome
Review current bin procurement and stock management process.	Completed January 2010	<ul style="list-style-type: none"> Joint bin procurement is now making the ordering process easier.
Adoption of joint process for the procurement and management of bin stocks.	Completed January 2010	<ul style="list-style-type: none"> A joint process has been implemented for the procurement and management of bin stocks. Stock is maintained by each authority but new orders are managed by SEBC as the lead authority.
Adoption of common Contract Procedure Rules to aid further joint procurement activities.	March 2011	<ul style="list-style-type: none"> This process is yet to be implemented as currently there are differences in contract procedure and procurement rules. As an interim measure the use of a lead procurement authority has been adopted, particularly in the Collection Round Review project.

Action 5 and identified action for 2010/11 Performance Improvement: Review of the delivery of the individual trade waste services and the development of an action plan to maximise income and diversion and ensure Diversion Incentive Fund targets are met.

Milestone	Completion Date	Progress/Outcome
-----------	-----------------	------------------

Review and if required, amend the projected diversion figures from the implementation of the recycling schemes.	June 2010	<ul style="list-style-type: none"> The DIF monies awarded to SEBC (£276,695 to extend the compostable waste collection and the collection of trade dry recyclables) and FHDC (£35,000 for trade waste recycling) are achieving the following diversion against the target; <table border="1" data-bbox="1279 411 2078 639"> <thead> <tr> <th rowspan="2">Authority</th> <th colspan="2">Anticipated annual tonnes diverted</th> <th colspan="2">Actual tonnes waste diverted</th> </tr> <tr> <th>2008/09</th> <th>2009/10</th> <th>2008/09</th> <th>2009/10</th> </tr> </thead> <tbody> <tr> <td>FHDC</td> <td>195</td> <td>803</td> <td>3</td> <td>126</td> </tr> <tr> <td>SEBC</td> <td>587</td> <td>993</td> <td>427</td> <td>984</td> </tr> </tbody> </table>	Authority	Anticipated annual tonnes diverted		Actual tonnes waste diverted		2008/09	2009/10	2008/09	2009/10	FHDC	195	803	3	126	SEBC	587	993	427	984
Authority	Anticipated annual tonnes diverted			Actual tonnes waste diverted																	
	2008/09	2009/10	2008/09	2009/10																	
FHDC	195	803	3	126																	
SEBC	587	993	427	984																	
Development of action plans to increase the volume of trade waste recycled and where possible, reduce trade waste collection costs.	August 2010	<ul style="list-style-type: none"> Ongoing 																			
Submission of quarterly claim and report for DIF monies.	Ongoing	<ul style="list-style-type: none"> Ongoing 																			
Review the options for a joint Trade Waste service	March 2011	<ul style="list-style-type: none"> As part of the development of the partnership, the management and development of the service will be investigated. 																			

Action 6 and identified action for 2010/11 Performance Improvement: Review and alignment of bring site contracts to upgrade the facilities and ensure regular site maintenance.

Milestone	Completion Date	Progress/Outcome
Undertake review of existing bring site contracts.	May 2010	<ul style="list-style-type: none"> In June 2010, the Suffolk Waste Partnership reviewed bring site provision within Suffolk. Due to the MRF contract renewal in 2014 it was however decided not to proceed but rather to begin aligning and improving data, distribution and appearance of current bank provision across Suffolk.
Identify opportunities to align service provision to bring	July 2010	<ul style="list-style-type: none"> As an interim approach therefore we recommend that our

sites across West Suffolk.		provision in West Suffolk is aligned with specific regard to geographic and density per household, service provision, appearance and accepted materials.
Ensure up to date contracts are in place with all contractors servicing bring sites, including clear responsibilities for the maintenance and upkeep of the facilities.	August 2010	<ul style="list-style-type: none"> As above
Identify additional sites where bring banks could be provided.	October 2010	<ul style="list-style-type: none"> This will continue as part of our current approach
Install additional bring sites and investigate opportunities for joint provision of recycling sites.	March 2011	<ul style="list-style-type: none"> This will continue as part of our current approach

Action 7: Development of phase two of the No Excuses campaign and the development of a strategy for the enforcement of litter offences.		
Milestone	Completion Date	Progress/Outcome
Development of a strategy to increase awareness of the penalties for littering offences.	June 2010	<ul style="list-style-type: none"> Further work has commenced to develop a strategy to progress the campaign to incorporate the proportionate and targeted use of enforcement as reported to the Joint Committee in January 2010 (paper JWC/A432).
Briefing prepared and delivered to all Safer Neighbourhood Teams across West Suffolk.	July 2010	<ul style="list-style-type: none"> Attendance and presentation to Safer Neighbourhood Teams in the Forest Heath area has been undertaken and is further planned in St Edmundsbury.
Hot spot litter areas identified.	August 2010	<ul style="list-style-type: none"> Although the identification of this milestone is ongoing, the cleansing review will help fully identify hot spot litter areas.
Plan developed to increase presence along with PCSO's at the identified hot spot areas.	October 2010	<ul style="list-style-type: none"> Ongoing
Town centre FPN target days identified and publicised.	January 2011	<ul style="list-style-type: none"> No progress to date

Action 8 and identified action for 2010/11 Performance Improvement: Investigation of opportunities to introduce food waste collections.

Milestone	Completion Date	Progress/Outcome
1. Analyse options and costs associated with the collection of food waste.	March 2010	<ul style="list-style-type: none"> The options and costs associated with the collection of food waste were identified and reported to the Joint Committee in June 2010 (paper A596).
2. Develop business case for the collection of food waste.	April 2010	<ul style="list-style-type: none"> The development of a business case and its presentation has however not been completed due to operational and strategic issues with our current contractor (Greenview Environmental (GE)) <ul style="list-style-type: none"> difficult trading conditions and changes to Environment Agency regulation associated operational costs Detailed costs are awaited from GE along with a revised programme for implementation. This will need to be carefully reviewed with colleagues at SCC to establish whether the proposals are still affordable.
3. Present business case to Joint Committee.	June 2010	<ul style="list-style-type: none"> Delayed as detailed above

Action 9 for 2010/11 Performance Improvement: Composting and recycling of all Street Sweepings

Milestone	Completion Date	Progress/Outcome
1. SEBC to begin composting and recycling all street sweepings and to investigate the feasibility of FHDC street sweepings to be delivered to the SEBC depot to be sent to the same facility.	June 2010	<ul style="list-style-type: none"> SEBC began the trial in June 2010 and since August, FHDC have also been composting and recycling their street sweepings. The total tonnage so far diverted (June-August 2010) is 285 tonnes. It is expected that this performance is likely to increase our joint household recycling and composting rate by approximately 2-3% per year.

Chart B1: FHDC Household Waste Data

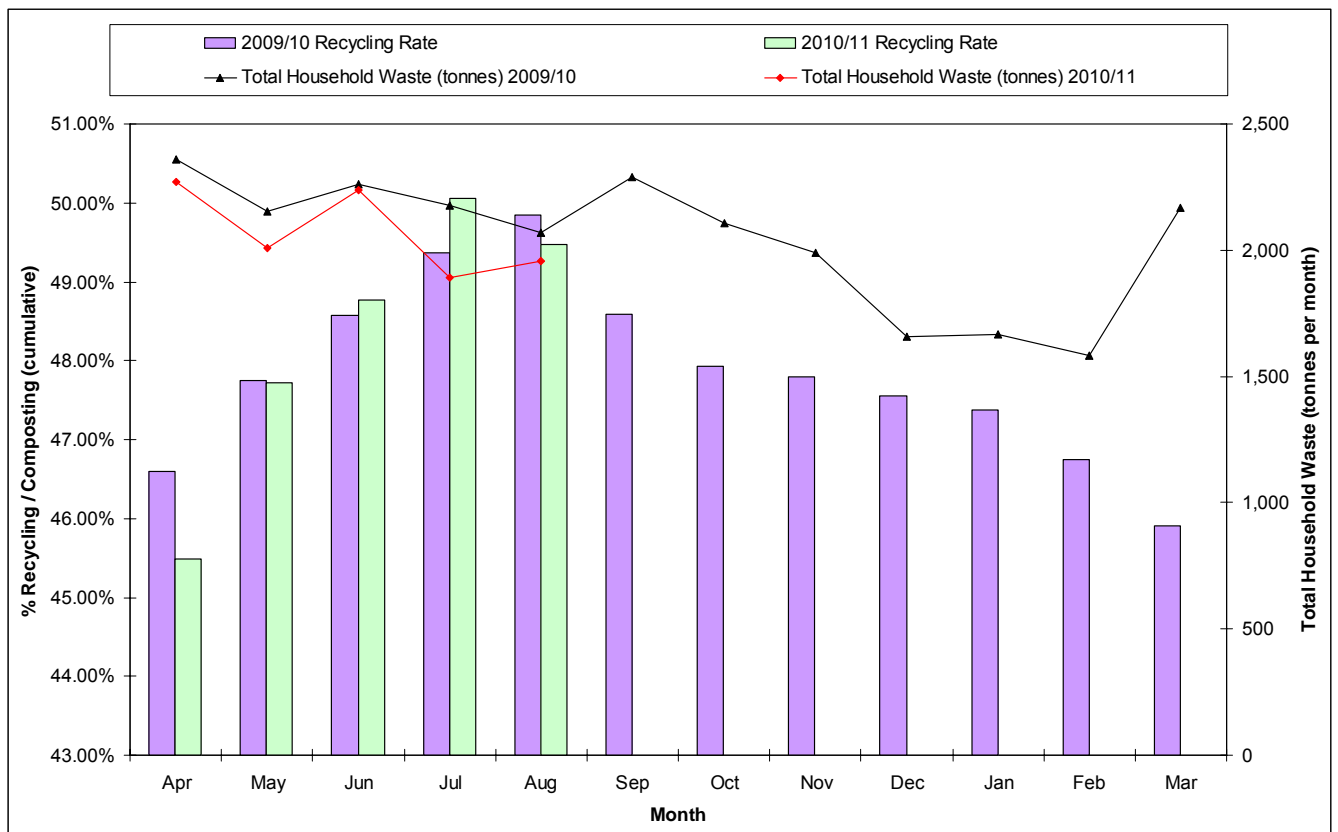


Chart B2: SEBC Household Waste Data

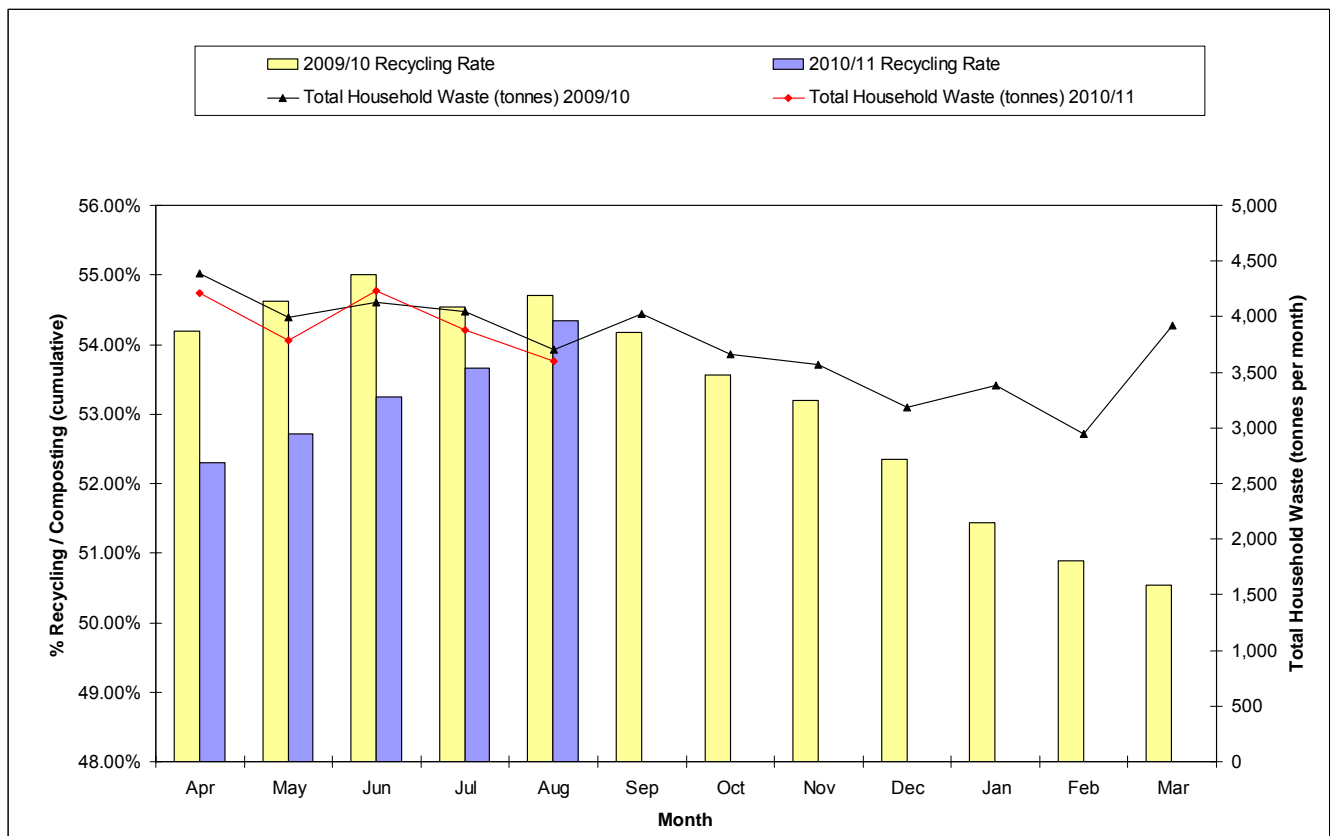


Figure B1: FHDC Environmental Cleanliness Data

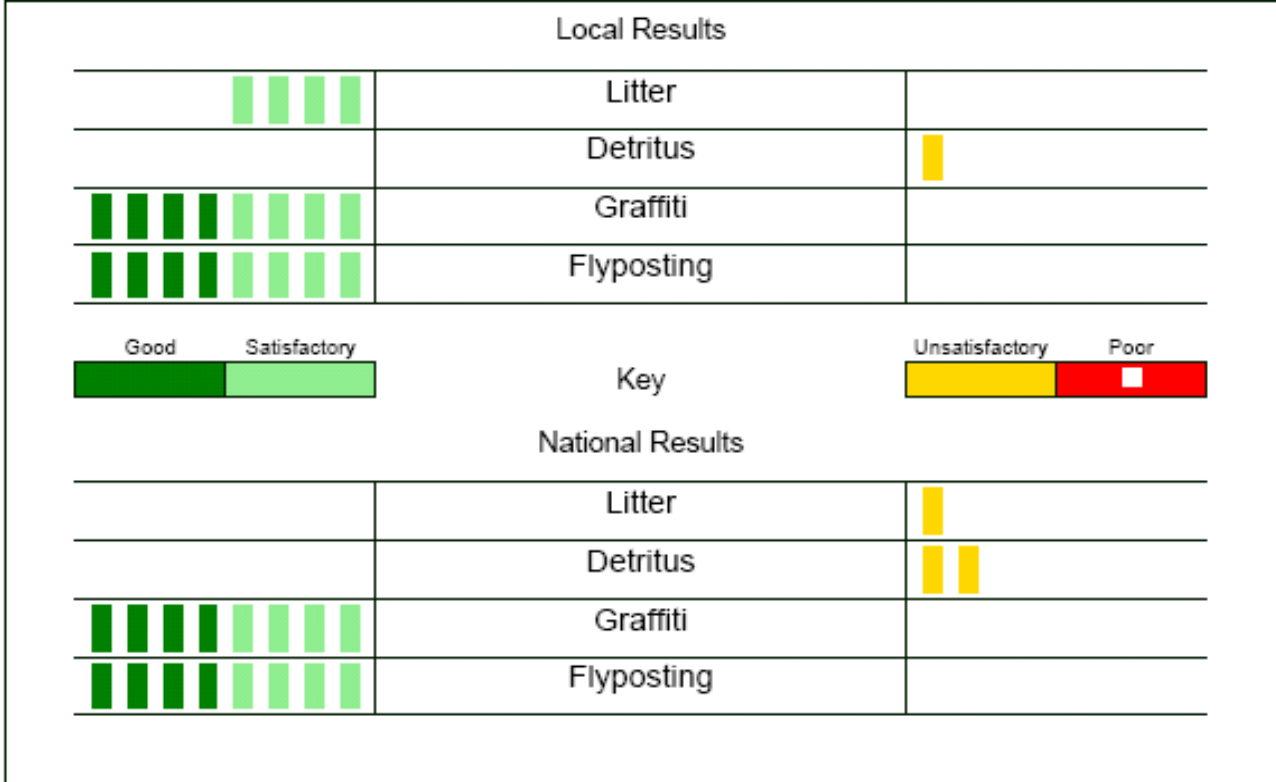
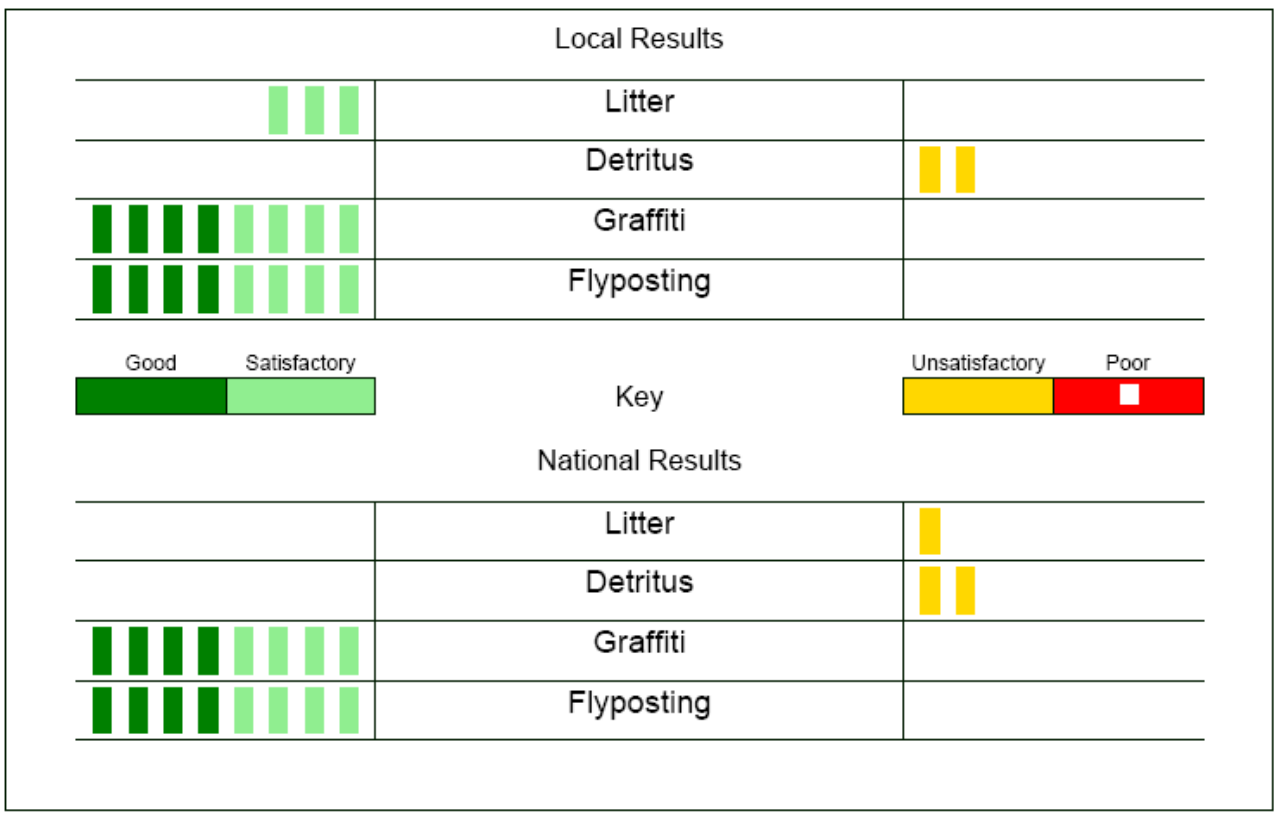


Figure B2: SEBC Environmental Cleanliness Data



Progress of the SWP

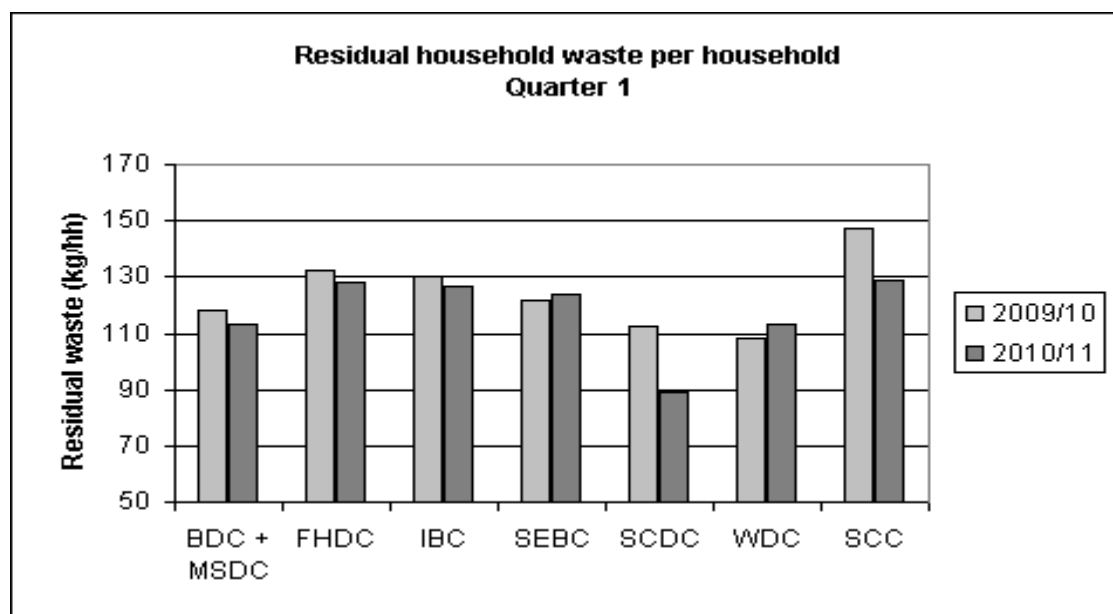
APPENDIX C

Report Title	SWP Performance (April - June 2010)
To	SWMG
Meeting Date	24th August 2010
Agenda Item	8
Author	Paul Wright/Rob Cole

1) NI 191 Residual household waste per household

	Quarter 1 2009/10	Quarter 1 2010/11	
HH waste not sent for recycling, reuse or composting	47,337	41,568	Tonnes
Number of households	322,147	322,147	
Residual HH Waste	146.94	129.03	Kg / Household

Source: WasteDataFlow NI 191

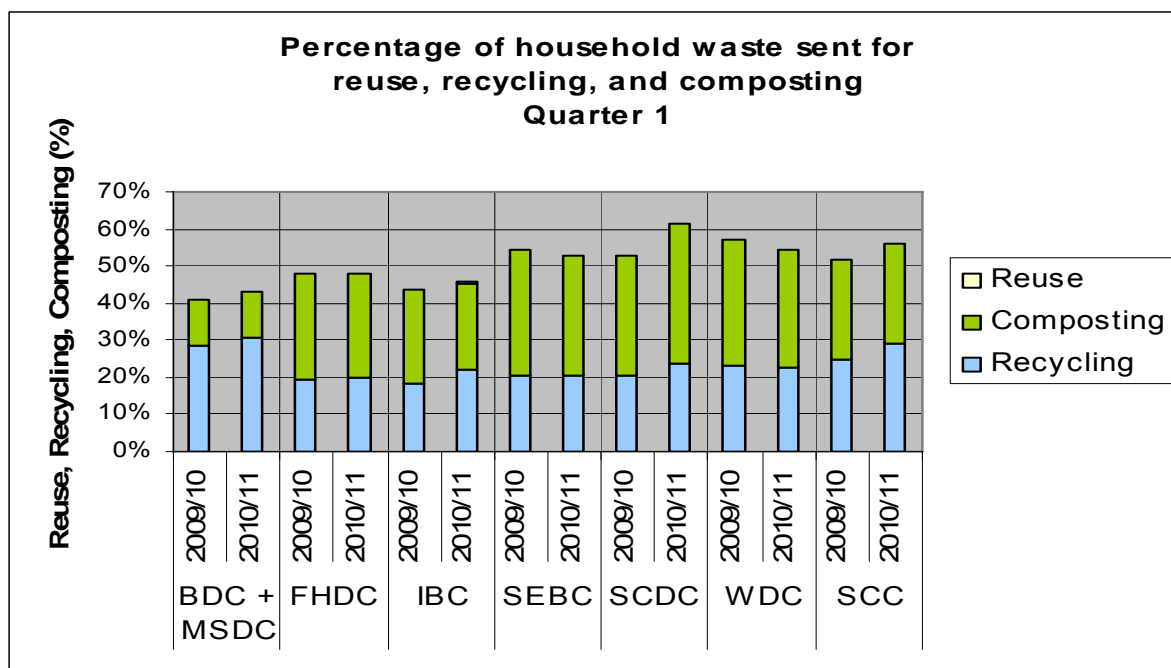


Source: WasteDataFlow NI 191

2) NI 192 Percentage of household waste sent for reuse, recycling and composting

	Quarter 1 2009/10	Quarter 1 2010/11	
HH waste sent for recycling, reuse or composting	50,589	53,019	tonnes
Total HH waste collected	97,926	94,590	tonnes
Reuse, Recycling and Composting Rate	51.66%	56.10%	

Source: WasteDataFlow NI 192.

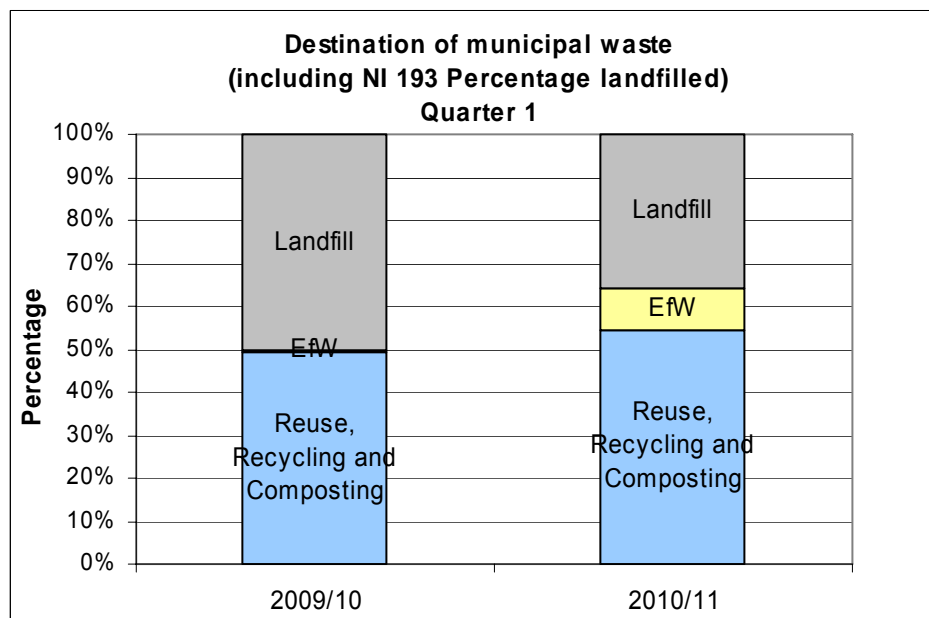


Source: WasteDataFlow BVPI 82a and b (recycling and composting) and Question 35 (reuse).

3) NI 193 Percentage of municipal waste landfilled

	Quarter 1 2009/10	Quarter 1 2010/11	
Total Municipal Waste	107,251.00	104,587.00	tonnes
Municipal Waste Landfilled	53,875.00	37,500.46	tonnes
Landfill rate	50.20%	35.90%	

Source: WasteDataFlow NI 193



Source: WasteDataFlow NI 192, NI 193, Q11 (WCA), and Q14 (WDA)

4) NI 195 Improved street cleanliness (levels of litter, detritus, graffiti and fly-posting)

		2010/11			
		NI 195 (i) Litter	NI 195 (ii) Detritus	NI 195 (iii) Graffiti	NI 195 (iv) Fly-posting
Babergh District Council		3%	14%	2%	0%
Forest Heath District Council		4%	14%	0%	0%
Ipswich Borough Council		4	3	1	0
Mid Suffolk District Council		1%	9%	0%	0%
St Edmundsbury Borough Council		2%	15%	2%	0%
Suffolk Coastal District Council		2%	22%	2%	0%
Waveney District Council		ns	ns	ns	ns

5) NI 196 Improved street and environmental cleanliness - flytipping

			NI 196
Babergh District Council			Effective
Forest Heath District Council			Not effective
Ipswich Borough Council			Effective
Mid Suffolk District Council			ns
St Edmundsbury Borough Council			Effective
Suffolk Coastal District Council			Effective
Waveney District Council			ns

6) Cost of household waste collection per household 2009/10

			Cost (£)
Babergh District Council			37.18
Forest Heath District Council			46.21
Ipswich Borough Council			
Mid Suffolk District Council			56.17
St Edmundsbury Borough Council			44.44
Suffolk Coastal District Council			56.49
Waveney District Council			

- The SCDC figure excluding the capital and depreciation costs of wheelie bin purchase is £51.81. It should be noted that SCDC fund the purchase of the domestic bins from capital over a period of 5 years. Therefore our costs should diminish significantly over the coming years. We believe these domestic bins should be depreciated over a period of 7 years and will seek to have this amended by SCDC this financial year.