

WSH – Battery Energy Storage System

DC21/1366/FUL

Development Control Committee
Deferral September 2021

Fire Officer - queries

- Can the fire alarm in the Battery Energy Storage System (BESS) be linked to the WSH system?
 - Yes it will be, the *"Voltage free contacts to enable an audible warning to be sounded throughout premises upon the detection of a fire condition or the operation of a manual call point"* will be used to do this.
 - The battery supplier and the main contractor are then required to connect the Fire Alarm system to the building.
- Confirmation of process for external isolation of the BESS in an emergency.
 - There will be an emergency cut off switch external to the battery and at the main LV electrical panel.

Positioning and Battery Location

- The location of the battery has been of concern to all involved in the project. We have explored various options during the meetings outlined in the submitted information.
- The project team considered various locations around WSH carpark which were discounted because of the following issues;
 - Unground services – drainage, electricity and gas impeding cable runs between the battery and WS substation.
 - Distance from sub station
 - Fire risk
 - Car parking impact
 - Cable sizing and radius
 - Appearance

Alternative locations

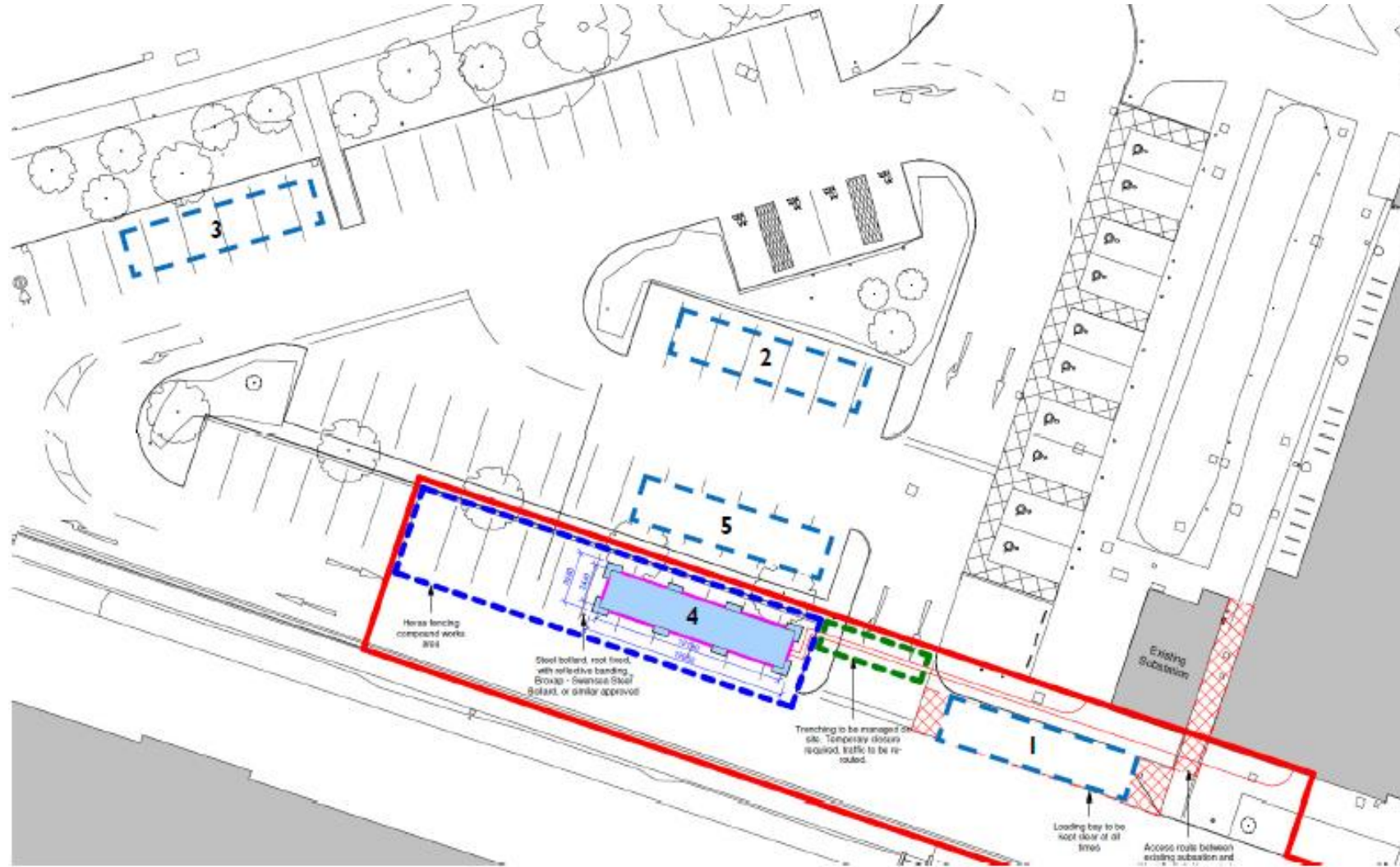


Figure 4 – Alternative Locations

Visual appearance

- The visual appearance has been considered at every stage. WSC are keen to minimise impact but also see the container as an opportunity to communicate our Net Zero Emissions work and organisation's decarbonisation to public.
- It is WSC's intention to brand the container with a suitable logo and relevant information to inform the public.
- WSC communications team and Environmental Management Group will continue to develop the marketing/branding/messaging to support this project.
- Our work will take into account the temporary positioning of the battery unit.

Branding

West Suffolk
Council



Final comments

- The BESS is an integral part of the energy strategy for the Western Way Development
- The BESS is part of the electrical design that is allowing WSC to avoid UKPN capacity upgrade costs of circa £4m to enable WWD.
- Key to remember that the Battery energy storage system will be moved into the Western Way Development Energy Centre when this is developed in 2023/4.
- It is important to note that the BESS has been brought forward with use of the Government Public Sector Decarbonisation Scheme funding.
 - This scheme has provided over £1m of grant money towards the project.
 - This grant is a cost saving on the Western Way Development